

# 1.77 Acre Brooklyn Industrial Yard With Service Building

651 Fountain Avenue, East New York, Brooklyn



Rendering to Show Proposed Delivery Condition



# Property Information

**1.77 Acre Yard With Service Building**  
651 Fountain Avenue, East New York, Brooklyn



**DY Realty Group** has been retained on an exclusive basis to handle the leasing of 651 Fountain Avenue in East New York, Brooklyn.

This 77,008 square foot (approximately 1.77 acres) industrial plot presents a prime opportunity for various industrial uses. The property features a functional 6,576 square foot shop building with 3 drive-in doors, suitable for maintenance, repairs, or administrative purposes. The site is comprised of an entire City block, boasting 4-street frontage, giving prime visibility and 3-street access. Planned improvements to the site include new paving, acoustic fencing, alteration and rehabilitation of the existing building, and new landscaping. All divisions will be considered.

Ideal uses include vehicle rental, logistics fleet management, bus / ambulance / towing operator, truck / trailer parking, municipal / utility services, and more.

The property benefits from proximity to major transportation arteries, ensuring convenient access for logistics and distribution.

## Property Details

Block	4527
Lots	61, 64, 67, 69, 74, 75, 76, 77, 78, 80, 82, 94, 113, 120
Total Building	6,576 sf Office, Lounge, & Repair Building
Total Land	70,432 sf
Total Plot	77,008 sf / 1.77 Acres
Loading	3 Drive-in Doors
Divisions	All Divisions Considered
Zoning	R4 (Vehicle Storage & Repairs Permitted)
Taxes	\$262,411.00 (2025/2026)
Asking Price	<b>Call or E-mail</b>

**For More Information or To Schedule  
A Tour, Contact Exclusive Agents:**

**Michael Makris**  
516-659-5231 Cell  
MMakris@DYRealty.com

**Ranee Jaber**  
917-757-4729 Cell  
RJaber@DYRealty.com

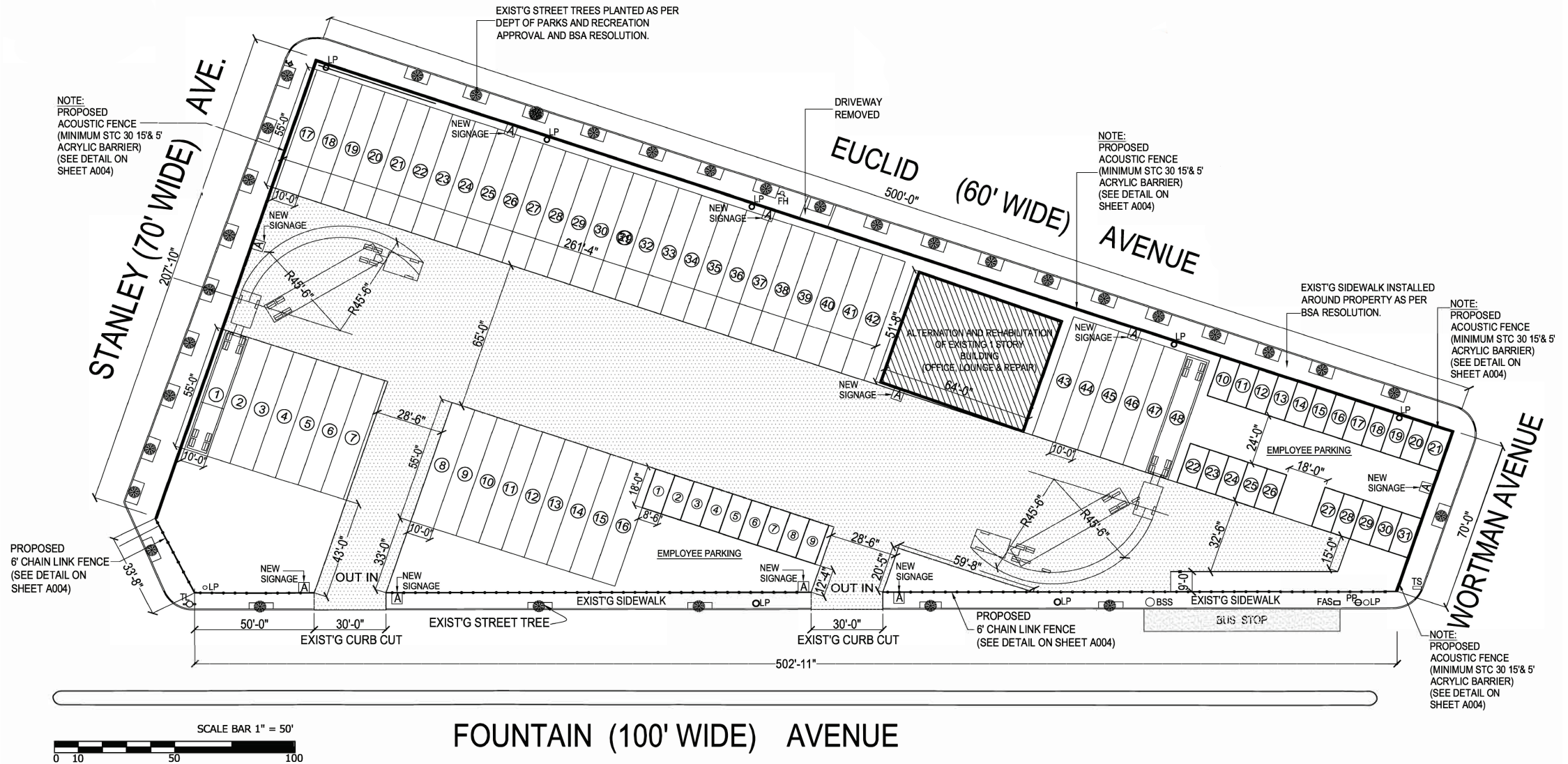
**Mathew Diana**  
718-541-6836 Cell  
MDiana@DYRealty.com

**Paul J. Yuras**  
718-729-7474 x113  
PYuras@DYRealty.com



# Proposed Conditions

**1.77 Acre Yard With Service Building**  
651 Fountain Avenue, East New York, Brooklyn



**For More Information or To Schedule  
A Tour, Contact Exclusive Agents:**

**Michael Makris**  
516-659-5231 Cell  
MMakris@DYRealty.com

**Ranee Jaber**  
917-757-4729 Cell  
RJaber@DYRealty.com

**Mathew Diana**  
718-541-6836 Cell  
MDiana@DYRealty.com

**Paul J. Yuras**  
718-729-7474 x113  
PYuras@DYRealty.com



# Location & Transit

**1.77 Acre Yard With Service Building**  
651 Fountain Avenue, East New York, Brooklyn



## Travel Distances

Maspeth	5.9 Miles
Downtown NYC	9.7 Miles
Long Island City	8.4 Miles
JFK Airport	4.7 Miles
LGA Airport	12.1 Miles

## Population

1 Mile	98,254
3 Miles	709,585
5 Miles	1,990,309



**For More Information or To Schedule  
A Tour, Contact Exclusive Agents:**

**Michael Makris**  
516-659-5231 Cell  
MMakris@DYRealty.com

**Ranee Jaber**  
917-757-4729 Cell  
RJaber@DYRealty.com

**Mathew Diana**  
718-541-6836 Cell  
MDiana@DYRealty.com

**Paul J. Yuras**  
718-729-7474 x113  
PYuras@DYRealty.com



# Contact Exclusive Agents

## Michael Makris

718-729-7474 x116 Office

516-659-5231 Cell

MMakris@DYRealty.com

## Ranee Jaber

718-729-7474 x135 Office

917-757-4729 Cell

RJaber@DYRealty.com

## Mathew Diana

718-729-7474 x134 Office

718-541-6835 Cell

MDiana@DYRealty.com

## Paul J. Yuras

718-729-7474 x113 Office

718-541-6836 Cell

PYuras@DYRealty.com

