

5,500sf Maspeth, Queens Warehouse/Garage for Lease
58-38 59 Street, Maspeth, NY 11378



MOVE IN READY!

BROKERS PROTECTED & WELCOME!

5,500 sf warehouse/garage space + 1,500sf Office Space

30' high ceilings - ZONED M3

(2) 20' x 16' Electric overhead garage doors + (2) 400 AMP Electrical Service

Full Lighting, Heating and Ventilation Units HVAC Installed

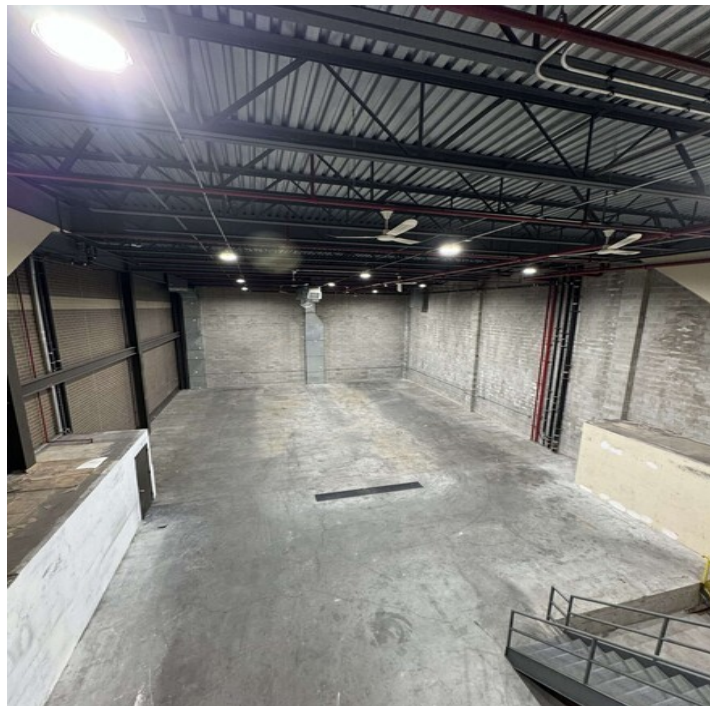
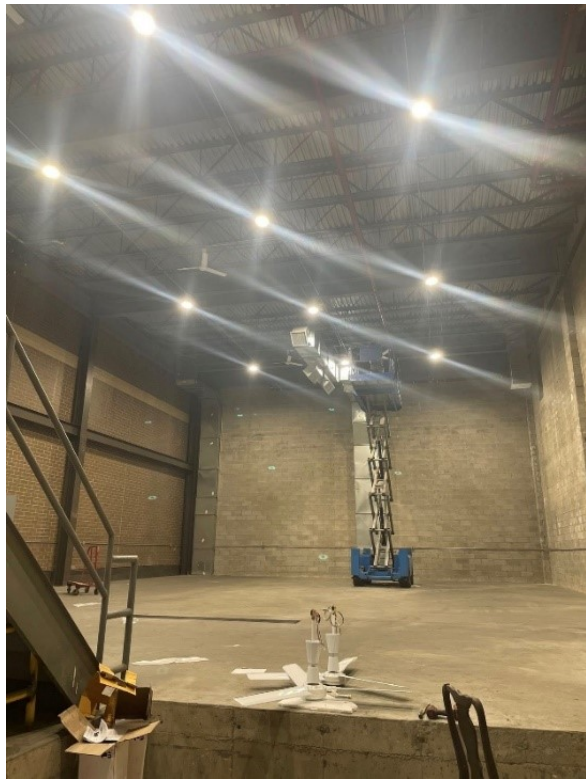
Long Term Leases Available.

- Warehouse OPEN FLOOR with NO Columns
- Prime Location in Maspeth's Industrial Park Section of Queens
- Property Eligible for Relocation Employment Assistance Program
 - Government Industrial Business Zone Relocation Credit
 - Eligible for many different Gov Rebates and Tax breaks
 - Property Tax Abatement
- **Good Guy Agreement & Excellent Credit and Financials are Required.**

Minutes to downtown & midtown Manhattan via the Brooklyn Queens Expressway--Easy access to Long Island, Bronx & Brooklyn.

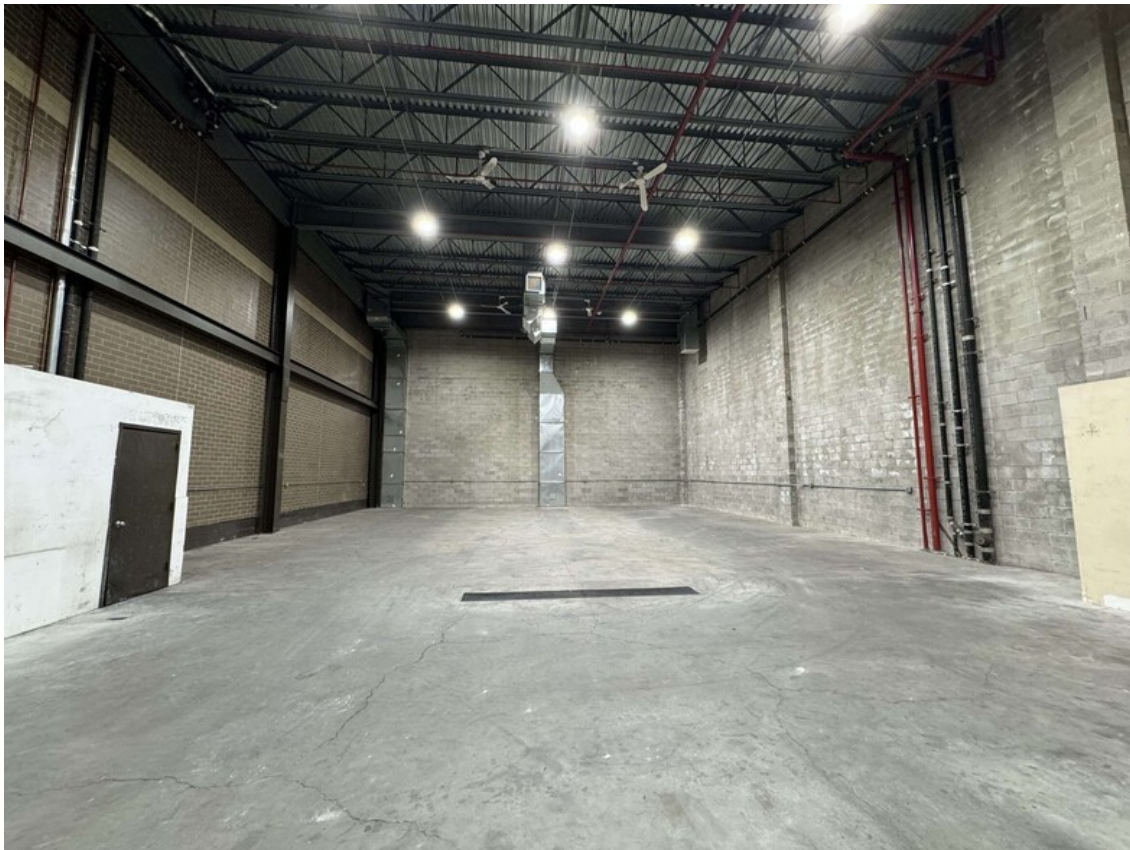
Brokers are requested to please **NOT advertise PICTURES OR Address**
No mechanical, fabrication or fresh food produce businesses PLEASE!

CONTACT 347-739-1976



Brokers are requested to please **NOT** advertise PICTURES OR Address
No mechanical, fabrication or fresh food produce bussinesses PLEASE!

CONTACT 347-739-1976



Brokers are requested to please **NOT advertise PICTURES OR ADDRESS**
No mechanical, fabrication or fresh food produce bussinesses PLEASE!

CONTACT 347-739-1976



Brokers are requested to please **NOT** advertise **PICTURES OR ADDRESS**
No mechanical, fabrication or fresh food produce bussinesses PLEASE!

CONTACT 347-739-1976