



# New Construction Brooklyn Industrial For Lease

5901 Foster Avenue / 1500 Ralph Avenue, Canarsie, Brooklyn



# Building Information

**5901 Foster Avenue / 1500 Ralph Avenue**  
New Construction Brooklyn Industrial Delivering Q4 2025



**DY Realty Group, LLC** has been retained on an exclusive basis to handle the leasing of 5901 Foster Avenue / 1500 Ralph Avenue in Canarsie, Brooklyn.

Available for lease will be a new construction building totaling 34,564 sf. There will be a 31,614 sf ground floor with 20' to 30' ceiling height, 4 interior loading dock positions and 6 drive in doors, as well as 2,950 sf total mezzanine office over the loading dock areas. Adjacent to the building will be 9,956 sf fenced and paved parking. The site is a corner property with two street frontage.

**The building divides naturally into two ±17,300 sf units with adjacent land included.**

Possession is expected in Q4 2025.

<b>Total Building</b>	±34,564 sf 1-Story
<b>Ground Floor</b>	±31,614 sf / 20' to 30' Ceiling
<b>Mezzanine</b>	±2,950 sf Total Office Space
<b>Total Land</b>	±9,916 sf Fenced & Paved
<b>Total Plot</b>	43,456 sf
<b>Drive-in Doors</b>	6 Total / 16' W x 16' H
<b>Loading Docks</b>	4 Positions / 55' Deep x 22' W
<b>Zoning</b>	M1-1
<b>Property Taxes</b>	ICAP Applied For
<b>Power</b>	2,000 Amps / 1,000 Amps Per Unit
<b>Possession</b>	Fall 2025
<b>Lease Price</b>	<i>Call or E-mail</i>

**For More Information or To Schedule A Tour, Contact Exclusive Agents:**  
**Paul J. Yuras** | 718-729-7474 x113 | 516-541-6836 Cell | PYuras@DYRealty.com  
**Paul Cianciaruso** | 718-729-0494 Direct | 917-607-2149 Cell | PCianciaruso@DYRealty.com



# Site Rendering

**5901 Foster Avenue / 1500 Ralph Avenue**  
New Construction Brooklyn Industrial Delivering Q4 2025



**For More Information or To Schedule  
A Tour, Contact Exclusive Agents:**

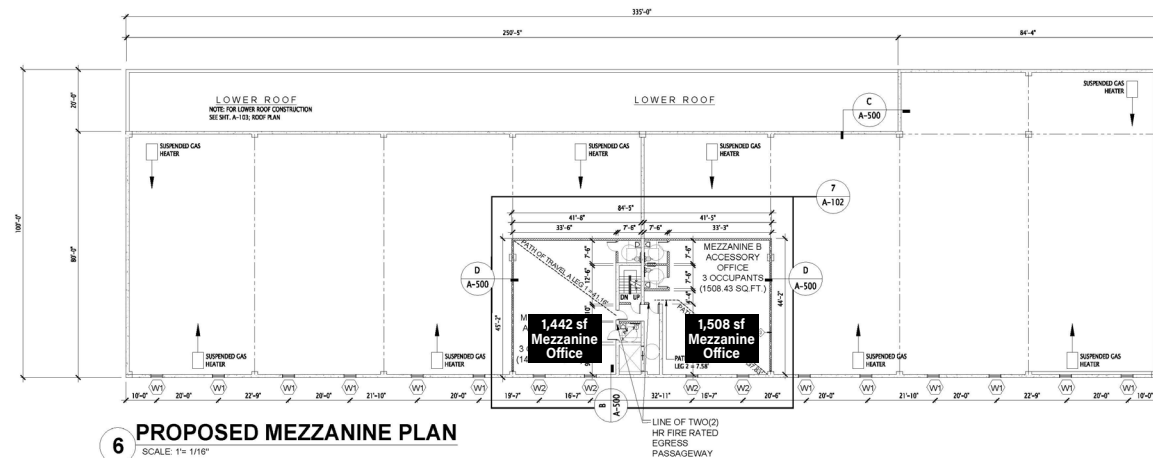
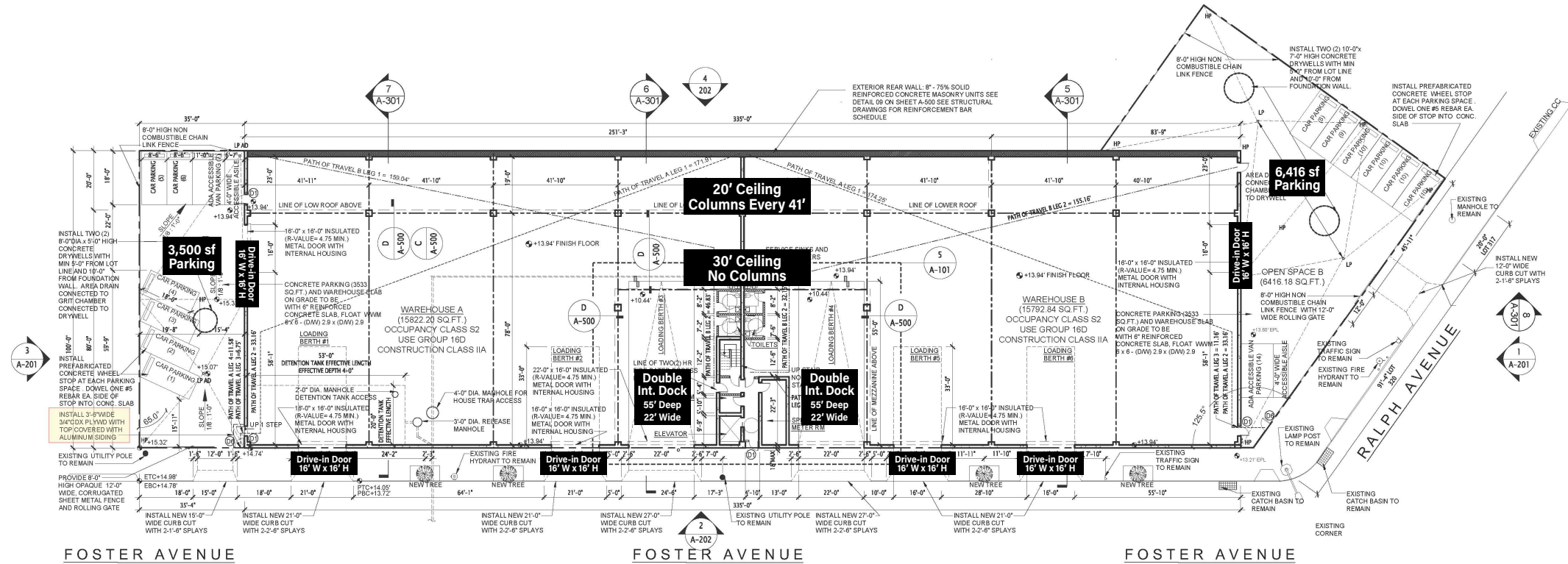
**Paul J. Yuras** | 718-729-7474 x113 | 516-541-6836 Cell | [PYuras@DYRealty.com](mailto:PYuras@DYRealty.com)

**Paul Cianciaruso** | 718-729-0494 Direct | 917-607-2149 Cell | [PCianciaruso@DYRealty.com](mailto:PCianciaruso@DYRealty.com)



# Proposed Plans

**5901 Foster Avenue / 1500 Ralph Avenue**  
New Construction Brooklyn Industrial Delivering Q4 2025



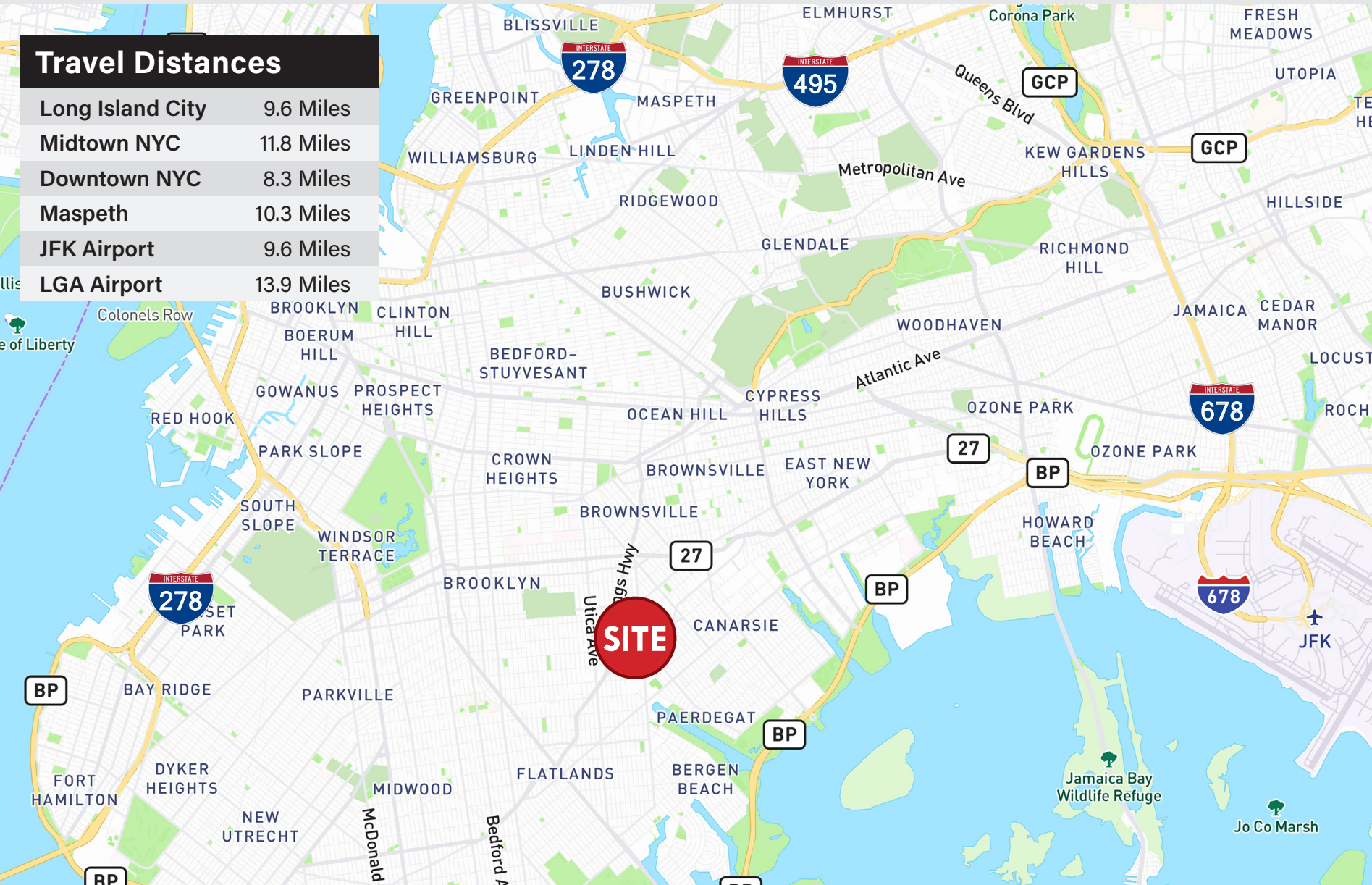


# Area Profile

**5901 Foster Avenue / 1500 Ralph Avenue**  
New Construction Brooklyn Industrial Delivering Q4 2025



Travel Distances	
Long Island City	9.6 Miles
Midtown NYC	11.8 Miles
Downtown NYC	8.3 Miles
Maspeth	10.3 Miles
JFK Airport	9.6 Miles
LGA Airport	13.9 Miles



**1500 Ralph Avenue** offers exceptional commercial and truck access to Brooklyn's key transportation arteries and beyond. Businesses requiring streamlined distribution and convenient connectivity will find this location ideally situated.

**Direct Proximity to Major Thoroughfares:** Enjoy swift connections to Flatbush Avenue, a vital north-south corridor providing direct routes to Downtown Brooklyn, Prospect Park, and southern Brooklyn communities.

**Easy Access to Truck Routes:** Navigate Brooklyn and the wider New York City area with ease via designated truck routes accessible from Ralph Avenue and connecting roadways, ensuring efficient delivery and transport operations.

**Proximity to Industrial and Commercial Hubs:** Benefit from the location's close proximity to established industrial and commercial zones within Brooklyn, streamlining business operations and reducing transit times.

**For More Information or To Schedule A Tour, Contact Exclusive Agents:**  
**Paul J. Yuras** | 718-729-7474 x113 | 516-541-6836 Cell | PYuras@DYRealty.com  
**Paul Cianciaruso** | 718-729-0494 Direct | 917-607-2149 Cell | PCianciaruso@DYRealty.com



# Contact Exclusive Agents

**Paul J. Yuras**

718-729-7474 x113 Office

718-541-6836 Cell

PYuras@DYRealty.com

**Paul Cianciaruso**

718-729-7474 x146 Office

917-607-2149 Cell

PCianciaruso@DYRealty.com

