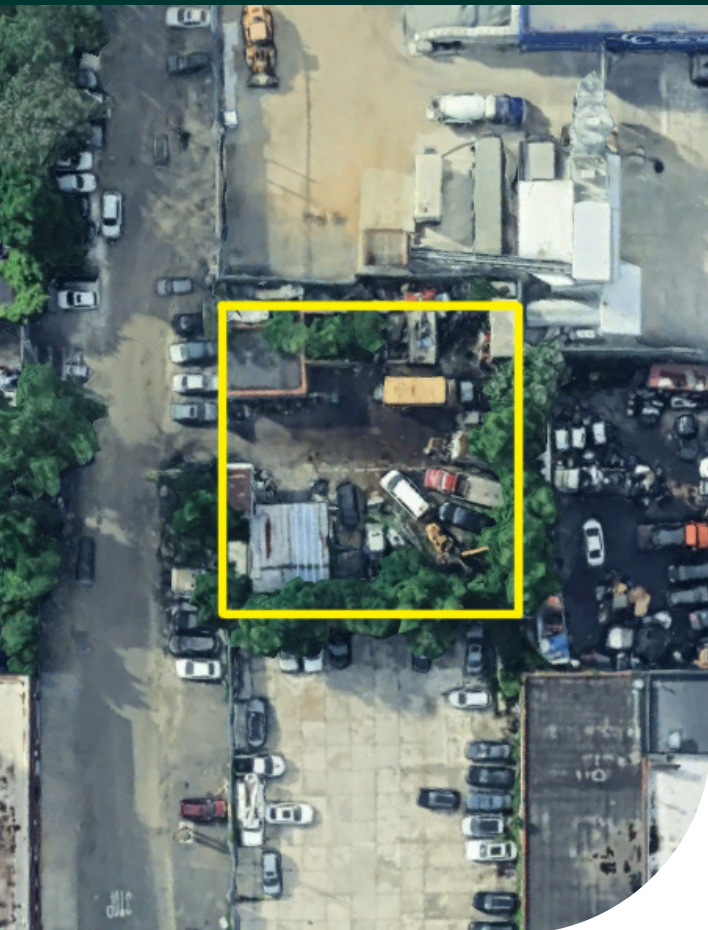


20,000 sf Bronx Industrial Land / Development Site

3520 Peartree Avenue, Eastchester, Bronx



AVAILABLE FOR SALE

Rare 10,000 sf industrial lot in the Bronx, between Boston Road and Hollers Avenue. Great opportunity for user/developer with 20,000 sf of developable air rights available. Great location close to I-95, and a short distance to the Dyre Avenue subway stop.

Plot Size	10,000 sf
Zoning / FAR	M2-1 / 2.0
Buildable	20,000 sf Commercial
Taxes 2025/2026	\$17,697.00
Asking Price	Call or E-mail

Ranee Jaber

Exclusive Agent
718-729-7474 x135
917-757-4729 Cell
RJaber@DYRealty.com