



29,000 sf 2-Story LIC Warehouse & Office Building For Lease

49-65 31st Place, Long Island City, Queens



Building Description

DY Realty Group has been retained on an exclusive basis to handle the leasing of 49-65 31st Place in the Long Island City section of Queens.

The building consists of a 29,000 sf 2-story industrial building, including a 15,000 sf ground floor warehouse and a 14,000 sf 2nd floor office. The ground floor has 16' ceiling height and loading through 2 drive-in doors. The second floor office is serviced by a passenger elevator.

Contact the Exclusive Agents for more information or to schedule a tour.

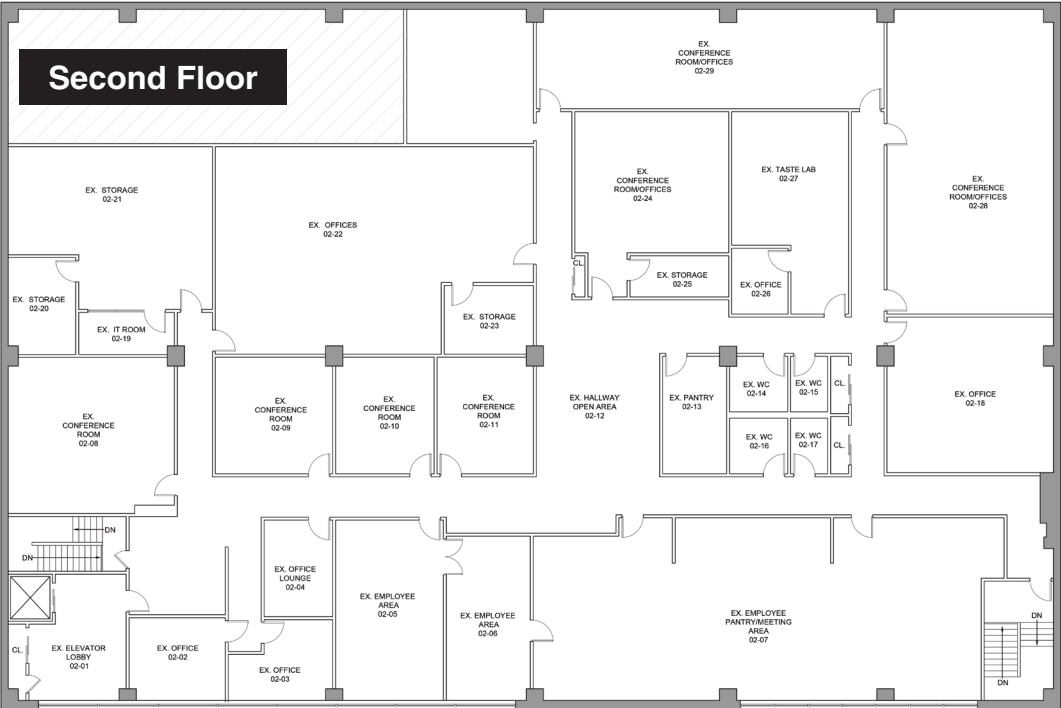
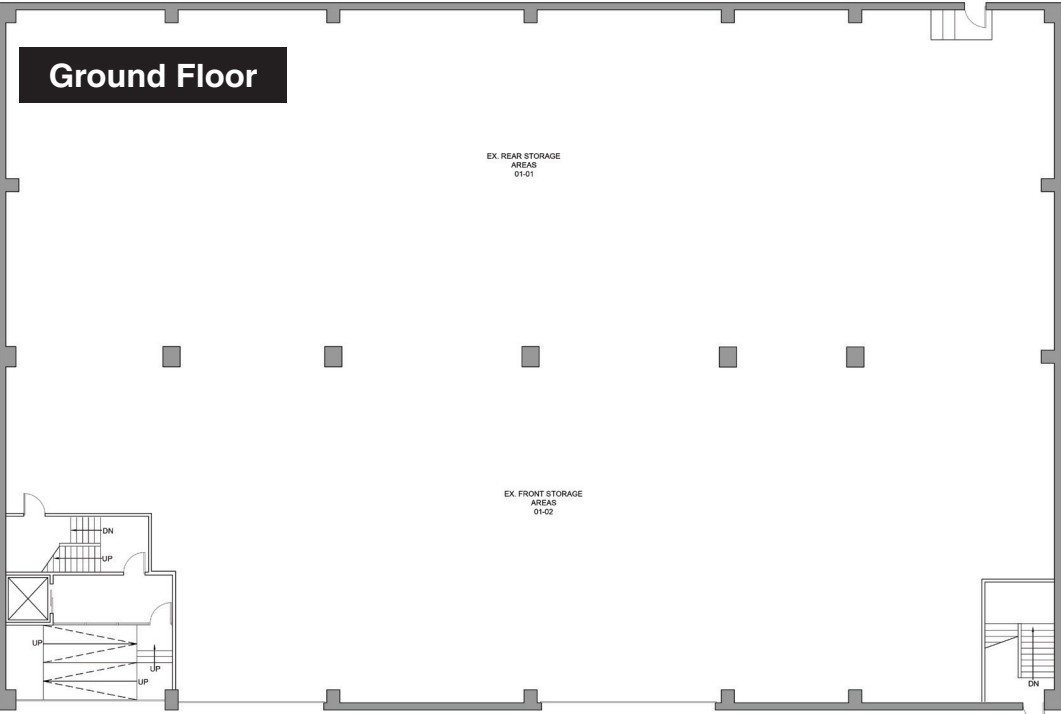
Total Building	29,000 sf 2-Story
Ground Floor	15,000 sf Warehouse
Second Floor	14,000 sf Office
Ceiling Height	±16' Ground Floor
Loading	2 Drive-in Doors
Elevator	1 Passenger
Zone	M2-1
Asking Price	Call or E-mail



ALL INFORMATION IS FROM SOURCES DEEMED RELIABLE, BUT SUBJECT TO: ERRORS, CHANGES WITHOUT NOTICE, PRIOR SALE OR LEASE, WITHDRAWAL WITHOUT NOTICE. ALL MEASUREMENTS ARE APPROXIMATE.

ALL INFORMATION IS FROM SOURCES DEEMED RELIABLE, BUT SUBJECT TO: ERRORS, CHANGES WITHOUT NOTICE, PRIOR SALE OR LEASE, WITHDRAWAL WITHOUT NOTICE. ALL MEASUREMENTS ARE APPROXIMATE.

Floor Plans



Location Information



ALL INFORMATION IS FROM SOURCES DEEMED RELIABLE, BUT SUBJECT TO: ERRORS, CHANGES WITHOUT NOTICE, PRIOR SALE OR LEASE, WITHDRAWAL WITHOUT NOTICE. ALL MEASUREMENTS ARE APPROXIMATE.

ALL INFORMATION IS FROM SOURCES DEEMED RELIABLE, BUT SUBJECT TO: ERRORS, CHANGES WITHOUT NOTICE, PRIOR SALE OR LEASE, WITHDRAWAL WITHOUT NOTICE. ALL MEASUREMENTS ARE APPROXIMATE.



**CONTACT
EXCLUSIVE
AGENTS:**

Ranee Jaber

718.729.7474 x135

917.757.4729 Cell

RJaber@dyrealty.com

Mathew Diana

718.729.7474 x134

718.541.6835 Cell

MDiana@dyrealty.com

