

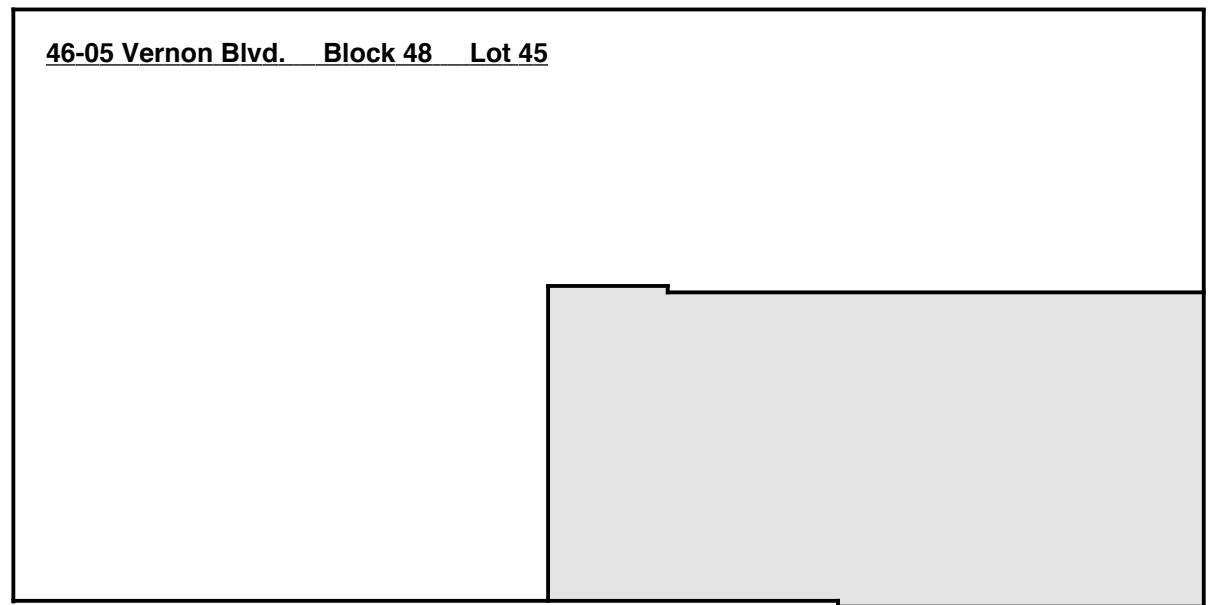
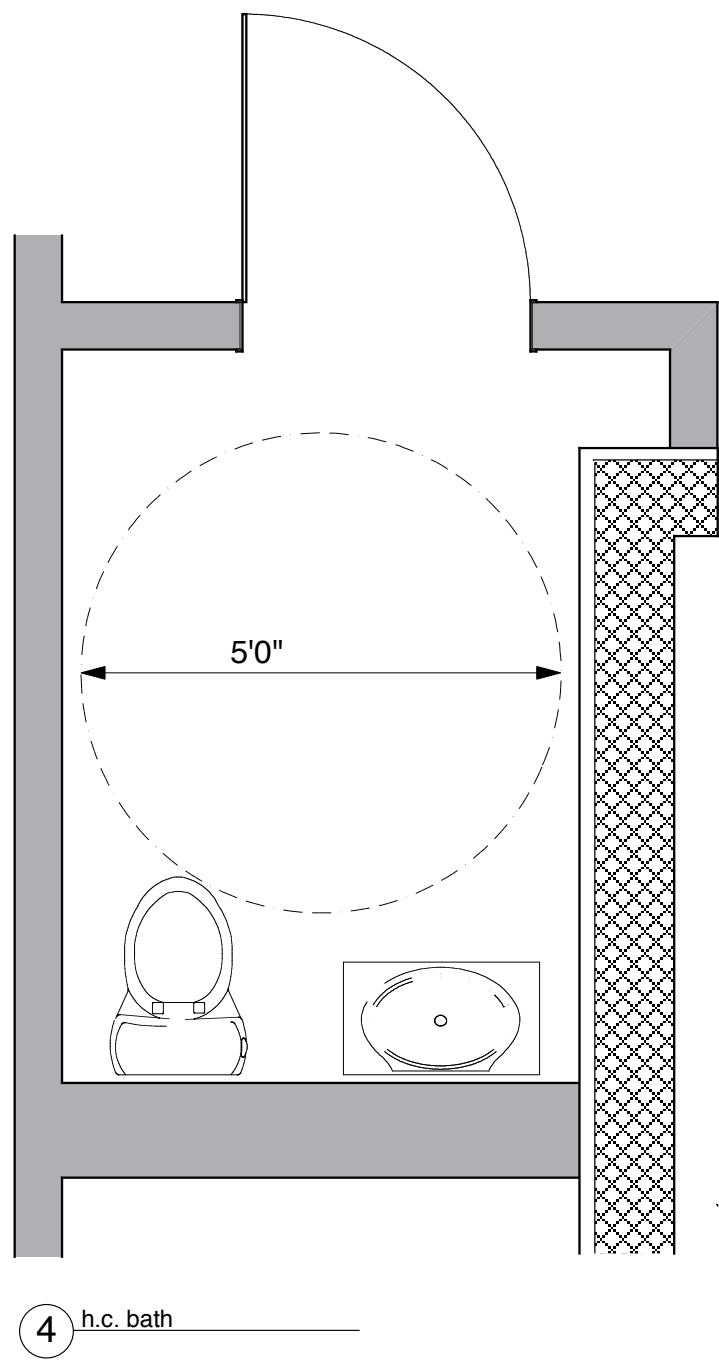
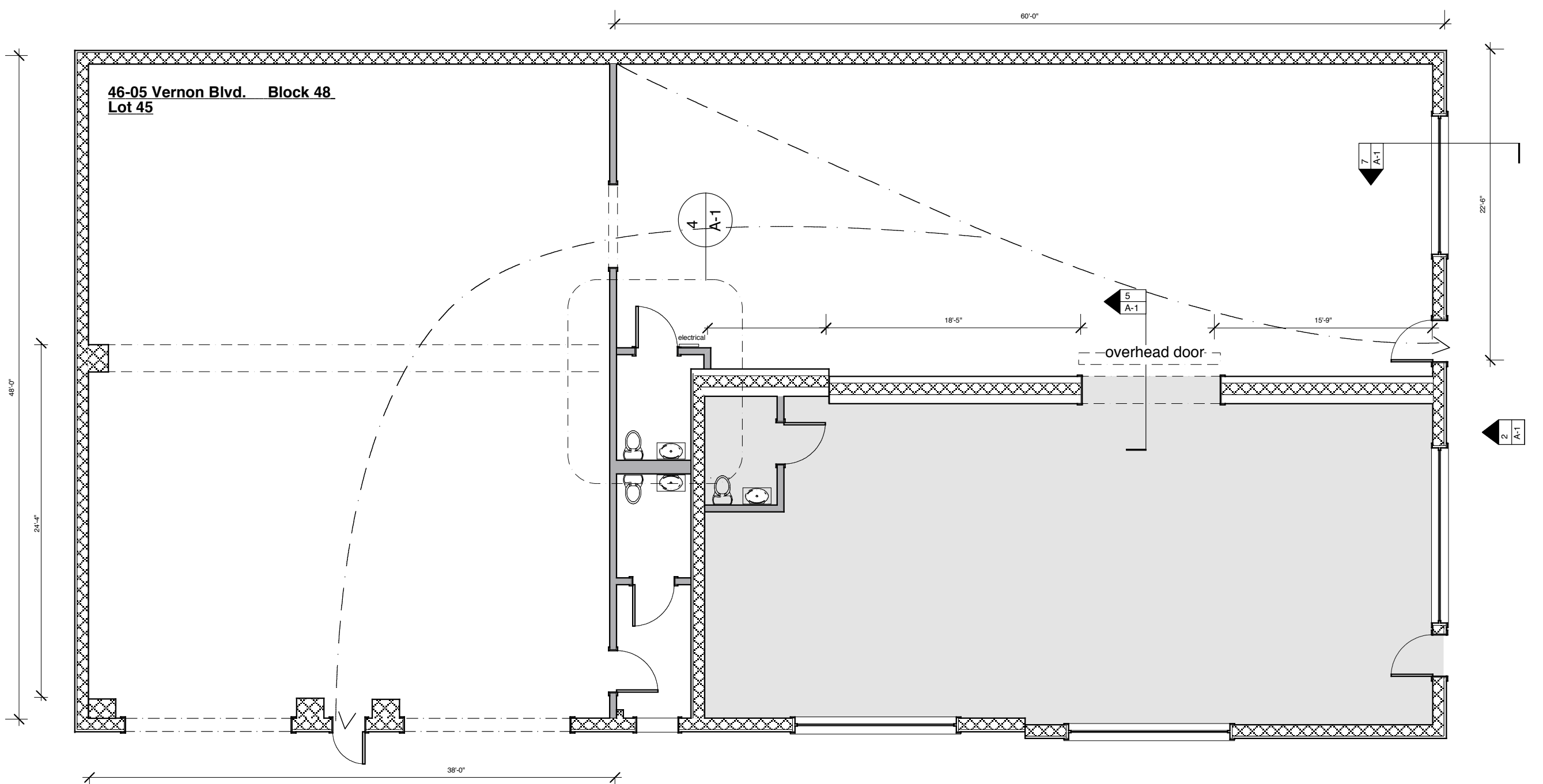
46-05 VERNON BLVD.
LONG ISLAND CITY, NY

Architect:
Thomas Paino
45-14 11 St.
Long Island City, NY 11101

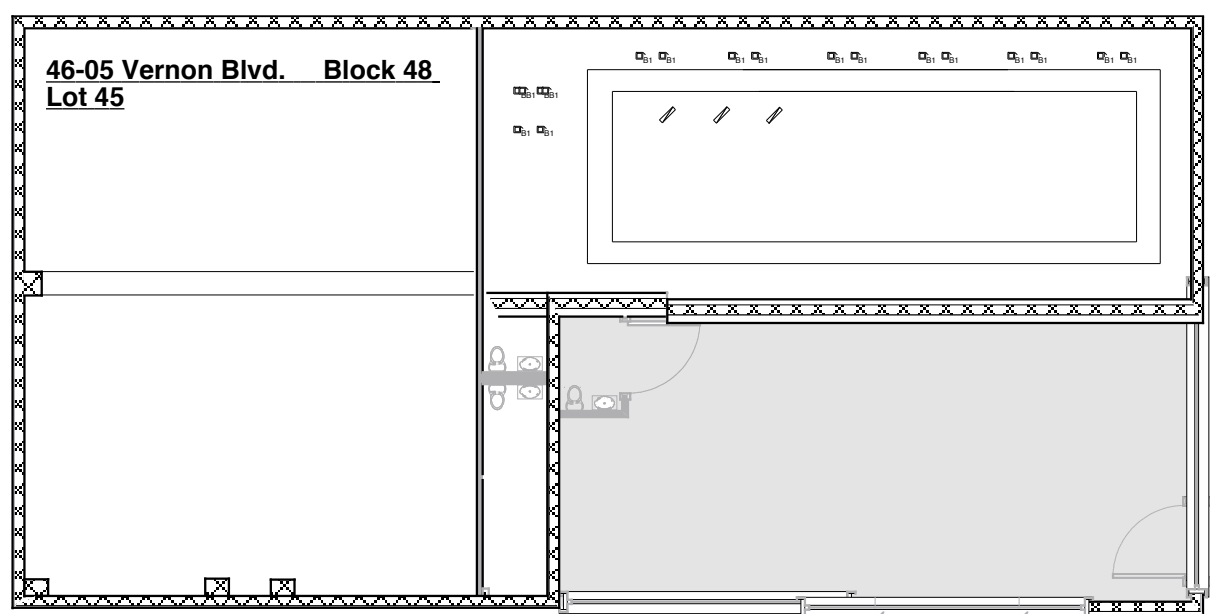
Contractor:

Structural Engineer

MEP Engineer



3 Plot Plan



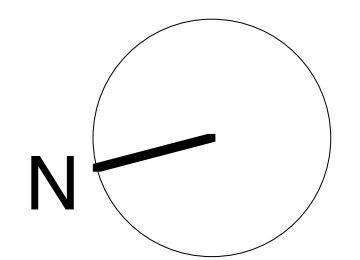
1 RCP/Lighting Plan

ZONING CALCULATION

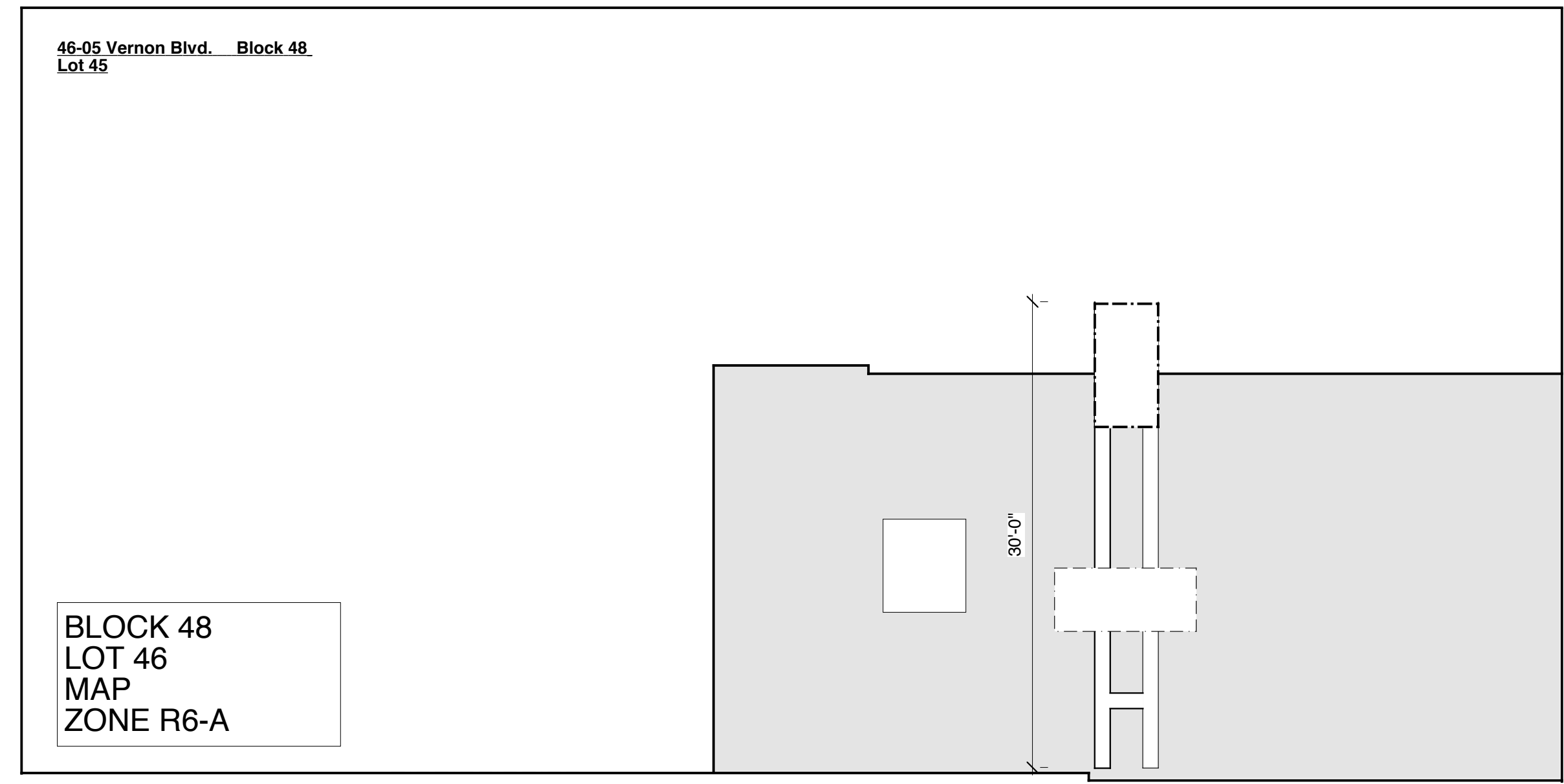
EQUIPMENT SPECIFICATIONS

ENTRANCE & EXIT CALCULATIONS

ENERGY CODE



2 1st Floor Proposed Elevation - 46-05



2 HVAC Plan

REVISIONS/ADDITIONS

NO.	DATE

DATE 5/11/18 SCALE AS NOTED

DRAWING TITLE

A-1