



# 5800 Second Avenue

5800 Second Avenue is an old prewar building located in Sunset Park and boasts prime space for warehousing, distribution, or a modern repurposed use.

At just \$25psf on the usable space it's ripe for Tenants moving away from North Brooklyn or national Tenants looking to plant their flag in New York City. Two loading docks service each space. Heavy power is in place and NYU Langone would be your neighboring Tenant. Please contact us for a tour at anytime.

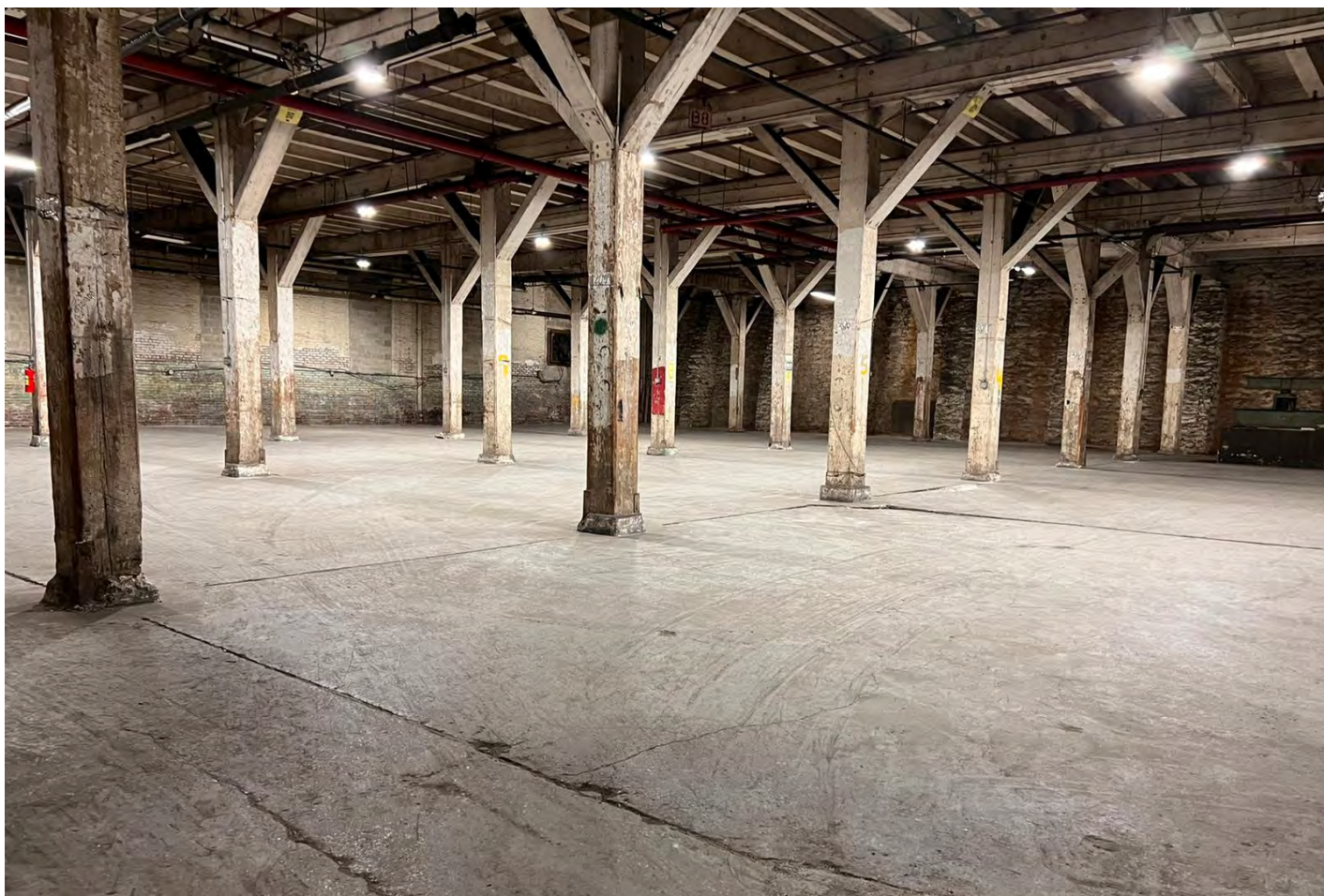
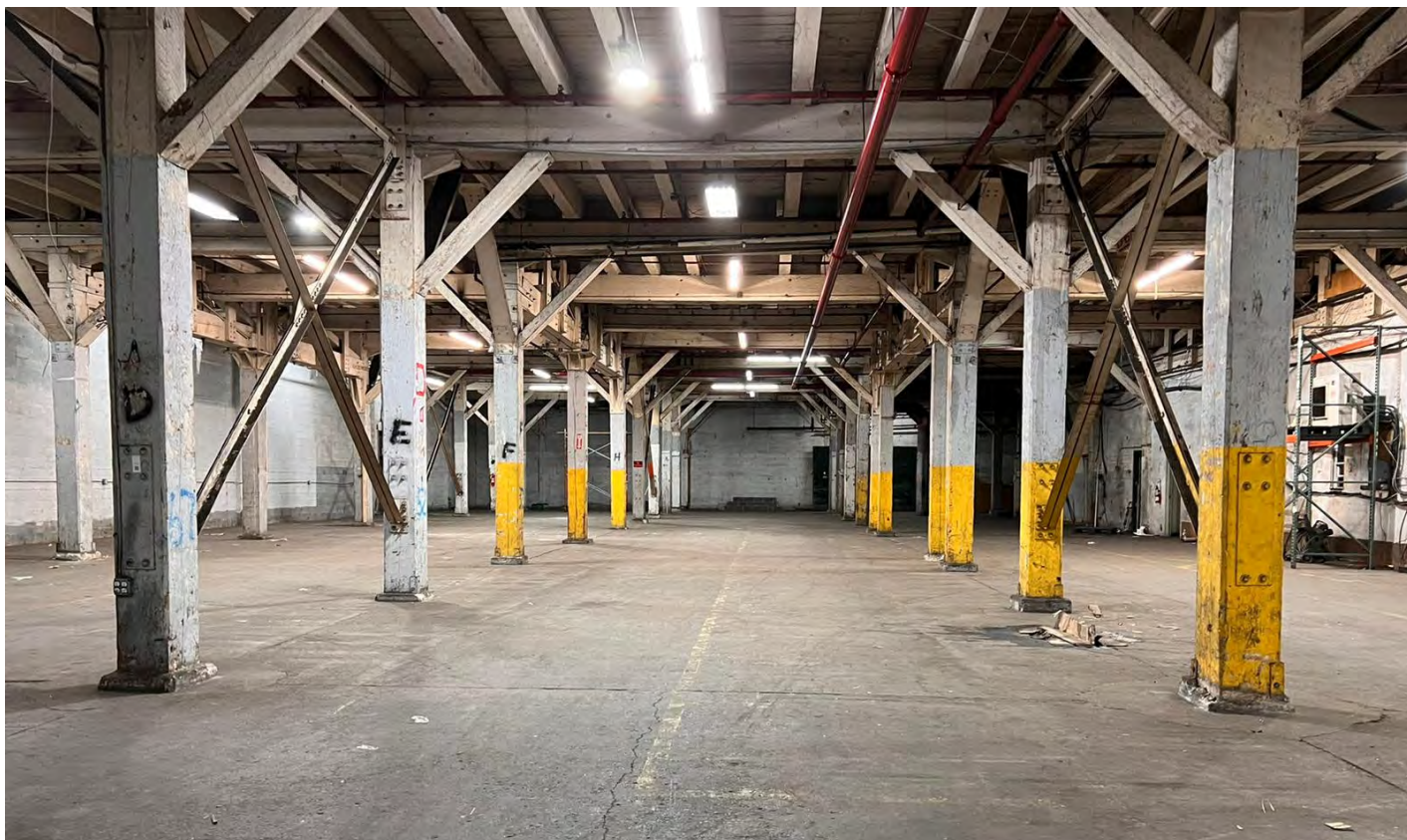


5800 Second Avenue, Brooklyn NY 11220



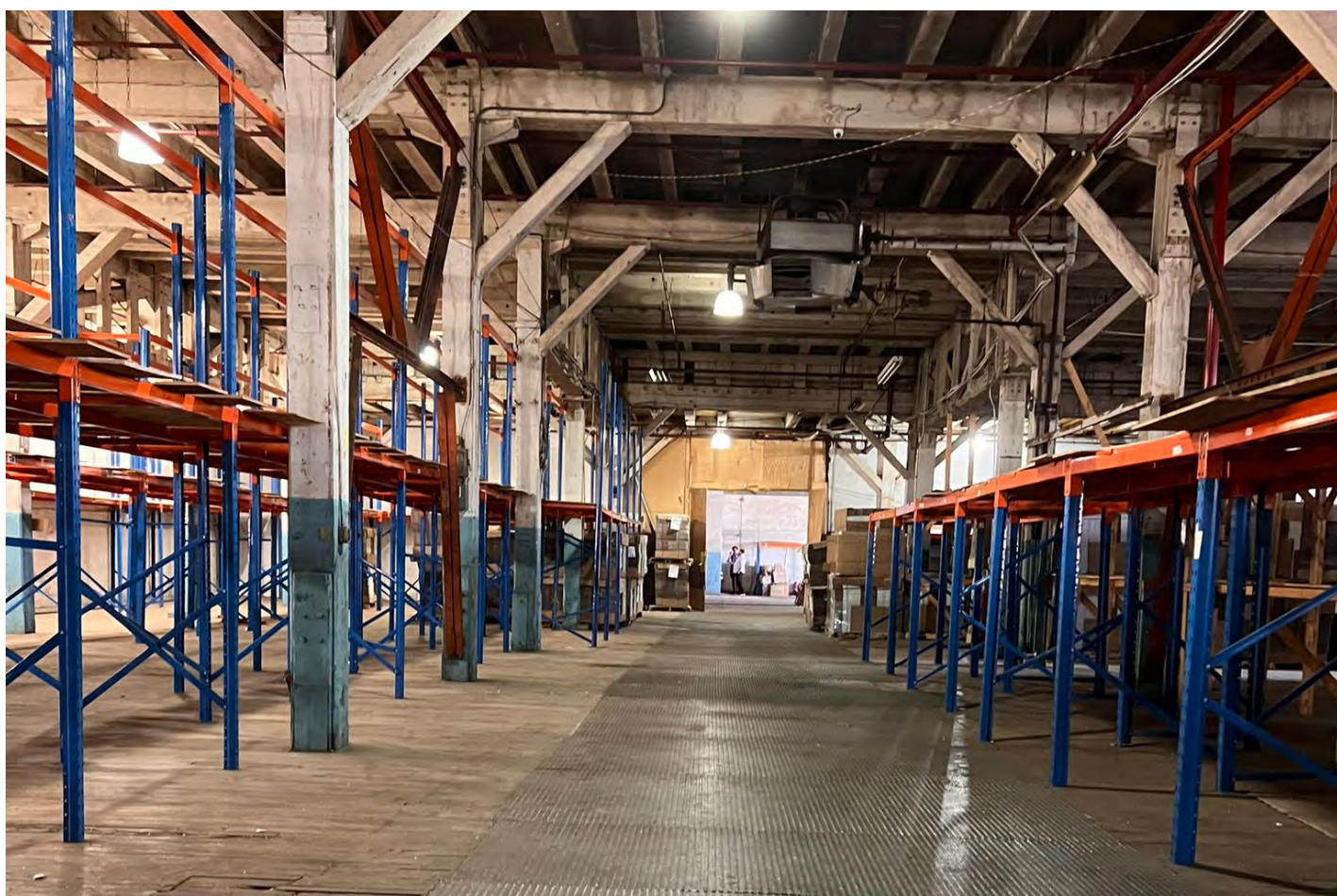
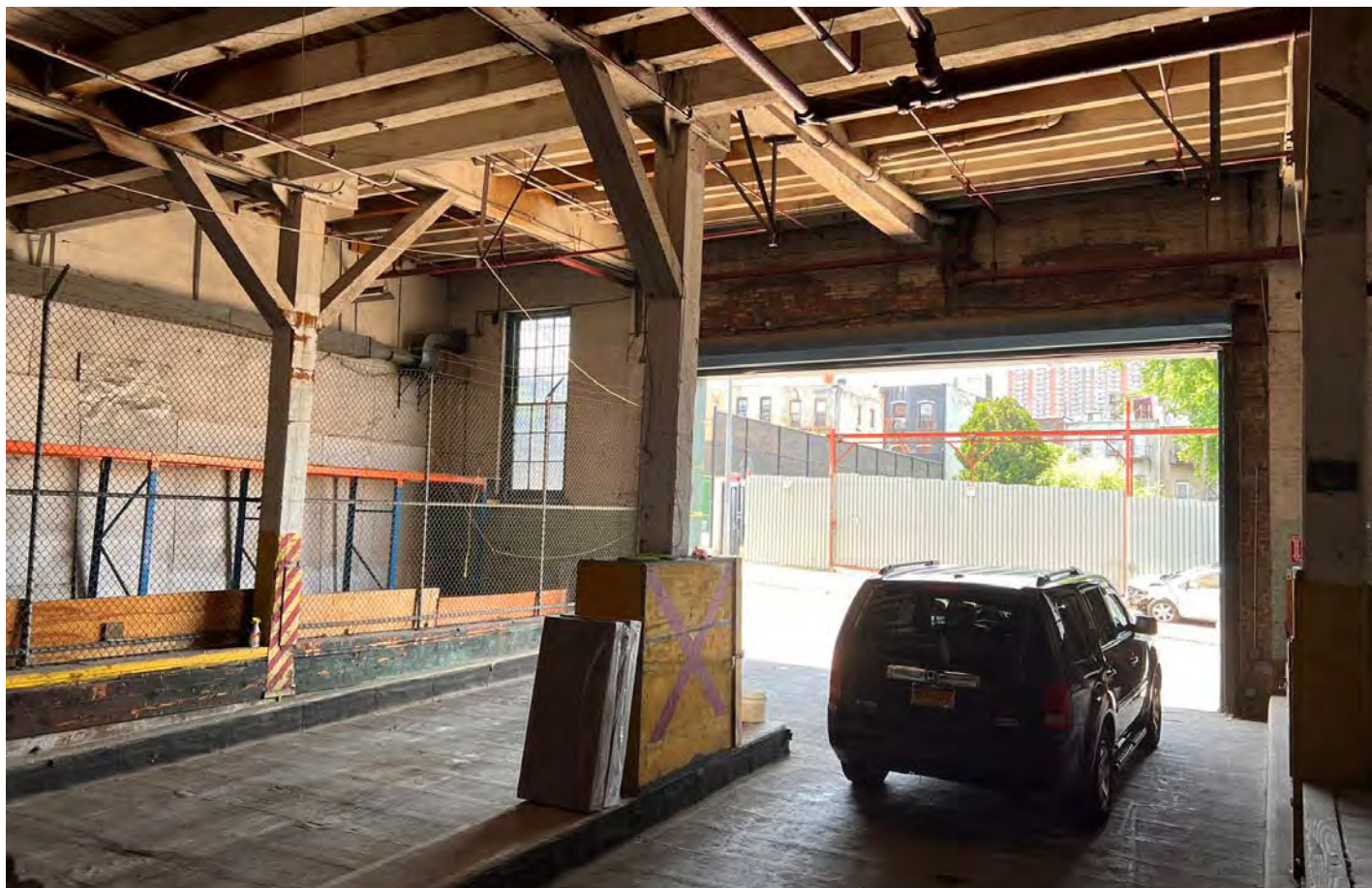


5800 Second Avenue, Brooklyn NY 11220





5800 Second Avenue, Brooklyn NY 11220



The Roebling Group is a licensed real estate brokerage. All information herein is intended for information purposes only and has been compiled from sources deemed reliable, but Roebling makes no warranty or representation as to the accuracy thereof. All dimensions provided are approximate. To obtain exact dimensions, Roebling advises you to hire a qualified architect or engineer.



5800 Second Avenue, Brooklyn NY 11220



**Space Available** 32,500 SF  
52,000 SF

**Price** \$25psf  
**Building Class** C  
**Drive Ins** 2  
**Clear Height** 18'  
**Clearance** 16'  
**Year Built** 1935



**Corey Cohen**  
Licensed Associate Real Estate Broker  
ccohen@roebblinggroup.com  
646.939.7375



**Amanda Bery**  
Licensed Real Estate Salesperson  
ab@roebblinggroup.com  
224.522.2379

**Additional Notes:** -22 feet left to right 4 columns  
-15 feet front to back  
-Floor loads 250 lbs per SF

**Video Tour:** <https://youtube.com/shorts/fOQbHcO8xU4>