

# ±17,000 sf Brooklyn Industrial Land For Lease

1182 Rockaway Avenue, Canarsie, Brooklyn



## Property Description

DY Realty Group, LLC is pleased to announce that it has been retained on an exclusive basis to handle the leasing of 1182 Rockaway Avenue in Canarsie, Brooklyn.

Available for lease is a  $\pm 17,000$  sf parcel of land. The site is zoned M1-1 and is ideal for numerous industrial uses.

The site is located just two blocks from Linden Boulevard, a major commercial thoroughfare, providing access to all boroughs of NYC via the Brooklyn-Queens Expressway and Van Wyck Expressway. The East 105th Street L subway line is a half mile from the site, and the B60 bus line is within walking distance.

<b>Total Land</b>	$\pm 17,000$ sf
<b>Frontage</b>	Rockaway Avenue & Avenue D
<b>Access</b>	Three Entry Gates On Two Streets
<b>Zone</b>	M1-1
<b>Condition</b>	Fenced & Paved
<b>Taxes</b>	$\pm \$1.50$ psf
<b>Lease Price</b>	<i>Call or E-mail</i>

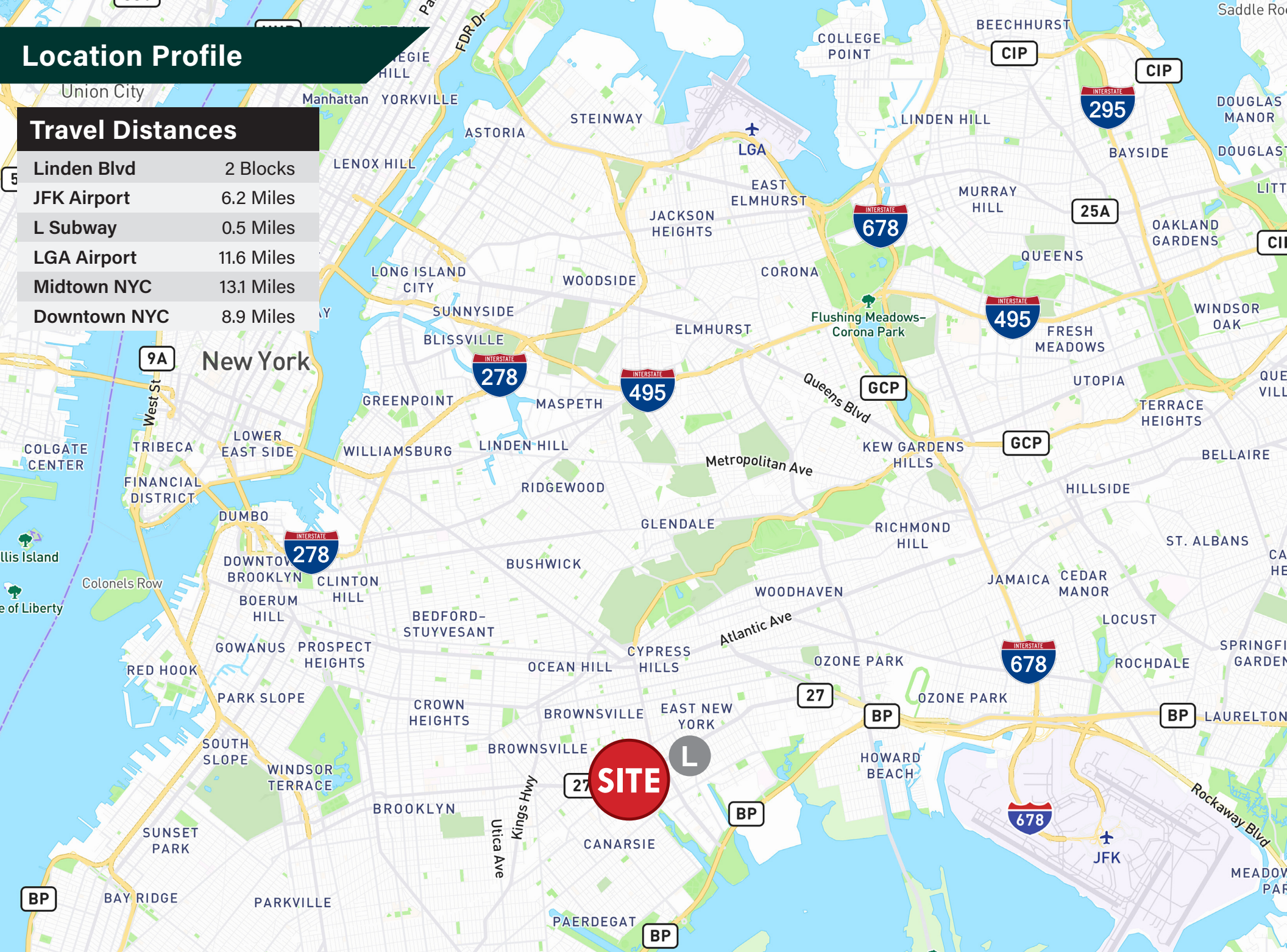


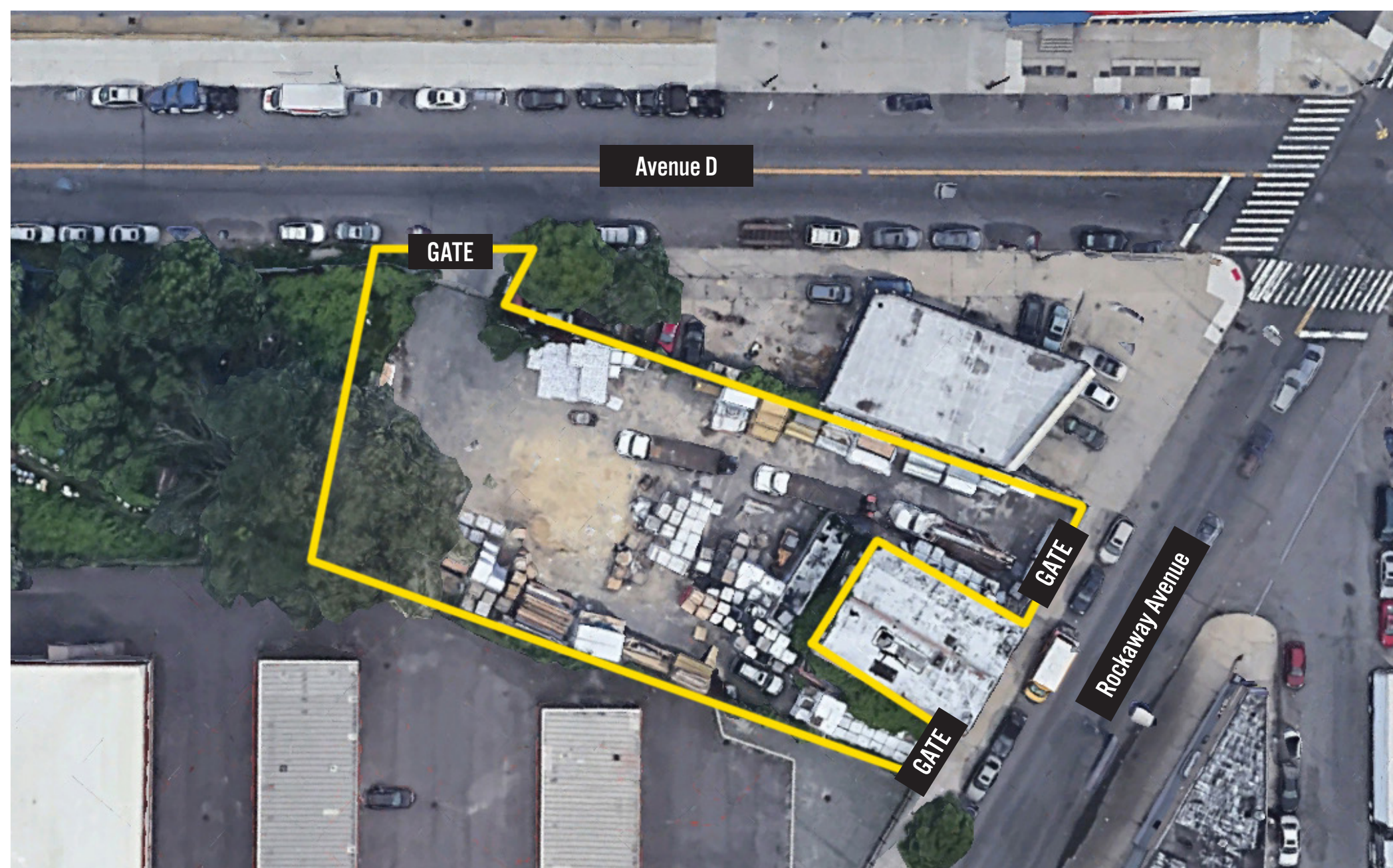
ALL INFORMATION IS FROM SOURCES DEEMED RELIABLE, BUT SUBJECT TO: ERRORS, CHANGES WITHOUT NOTICE, PRIOR SALE OR LEASE, WITHDRAWAL WITHOUT NOTICE. ALL MEASUREMENTS ARE APPROXIMATE

# Location Profile

## Travel Distances

Linden Blvd	2 Blocks
JFK Airport	6.2 Miles
L Subway	0.5 Miles
LGA Airport	11.6 Miles
Midtown NYC	13.1 Miles
Downtown NYC	8.9 Miles





**CONTACT  
EXCLUSIVE  
AGENT:**

**MATHEW DIANA**  
718.729.7474 x134 • 718.541.6835 cell  
mdiana@dyrealty.com



ALL INFORMATION IS FROM SOURCES DEEMED RELIABLE, BUT SUBJECT TO: ERRORS, CHANGES WITHOUT NOTICE, PRIOR SALE OR LEASE, WITHDRAWAL WITHOUT NOTICE. ALL MEASUREMENTS ARE APPROXIMATE

36-36 33RD STREET, SUITE 503 • LONG ISLAND CITY, NY 11106 • 718.729.7474 • WWW.DYREALTY.COM