

7,380 sf 1-Story Queens Warehouse For Sale

62-10 34th Avenue, Woodside, Queens



Property Description

DY Realty Group, LLC is pleased to announce that it has been retained on an exclusive basis to handle the sale of 63-10 34th Avenue in Woodside, Queens.

The property consists of a 7,380 sf 1-story building with 16' ceiling heights and 1 drive-in door.

The property is located in Woodside, Queens, just two blocks from the Brooklyn-Queens Expressway and one block from Northern Boulevard. The **E** **F** **M** **R** subway lines are just a 6 minute walk away.

Total Building 7,380 sf 1-Story

Building Dims. 60' x 123'

Total Plot 7,380 sf

Ceiling 16'

Loading 1 Drive-in Door

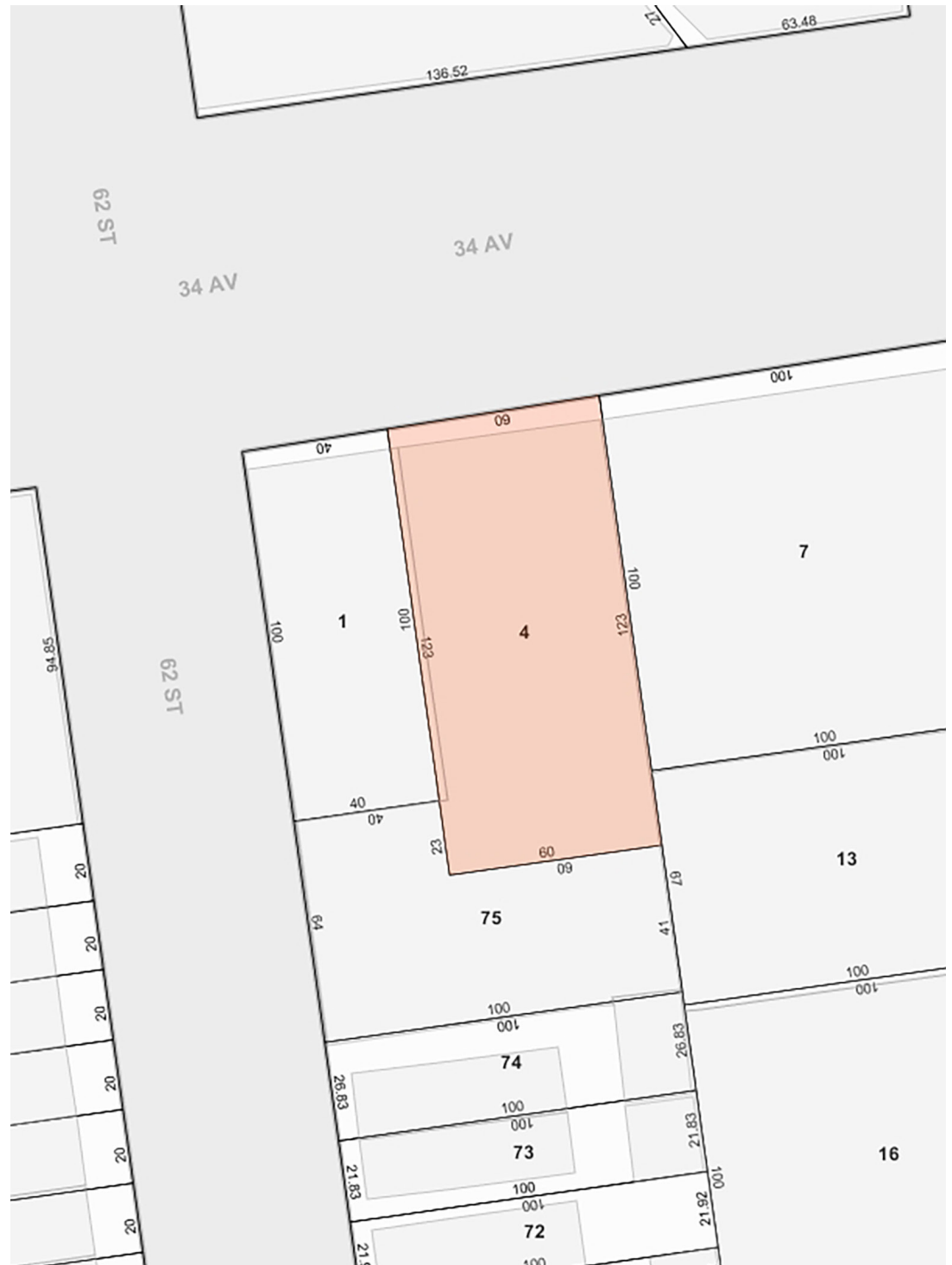
Zone M1-1

FAR 1.0 Commercial

Subway **E** **F** **M** **R**

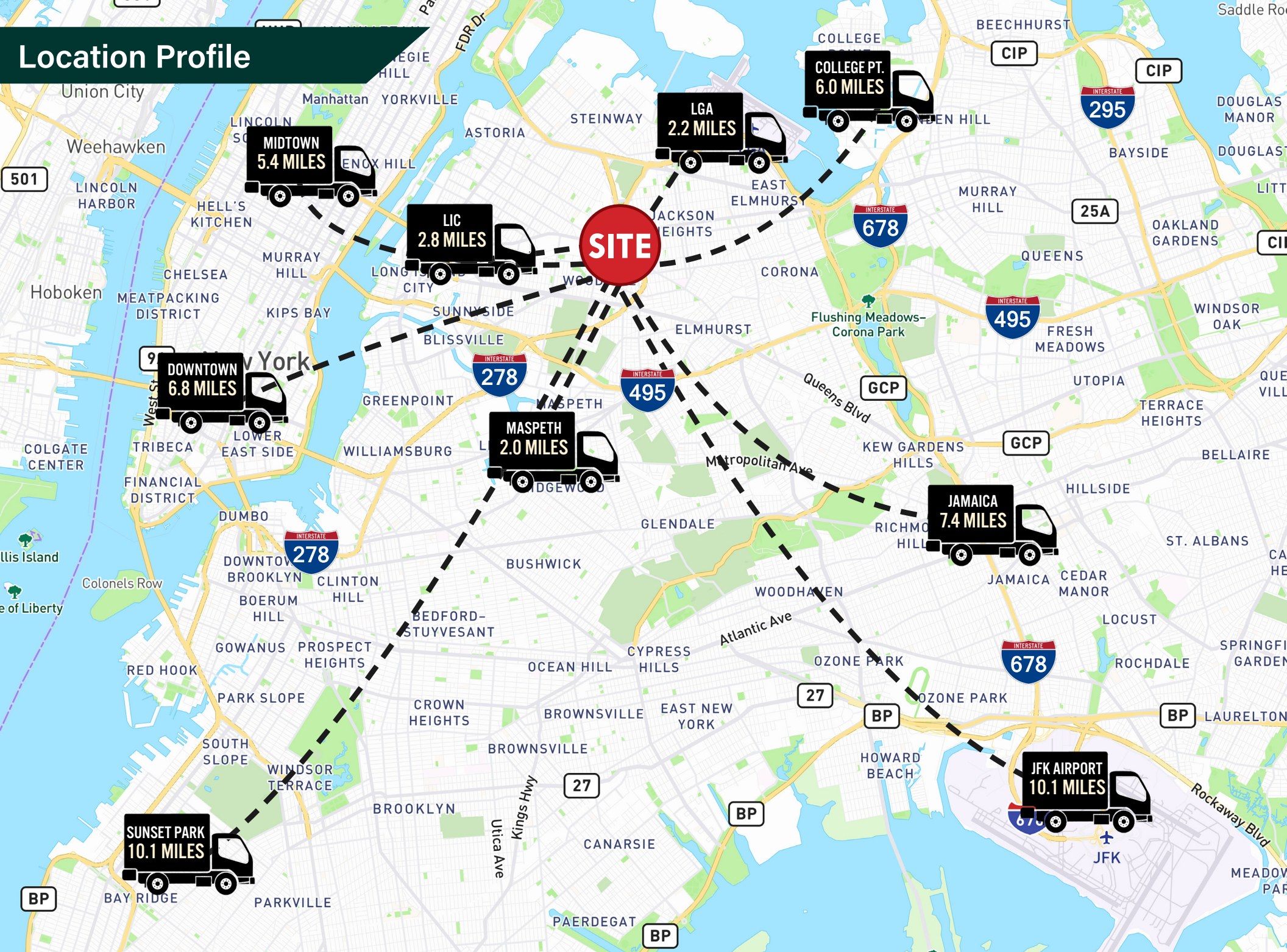
2022/2023 Taxes \$38,202.00

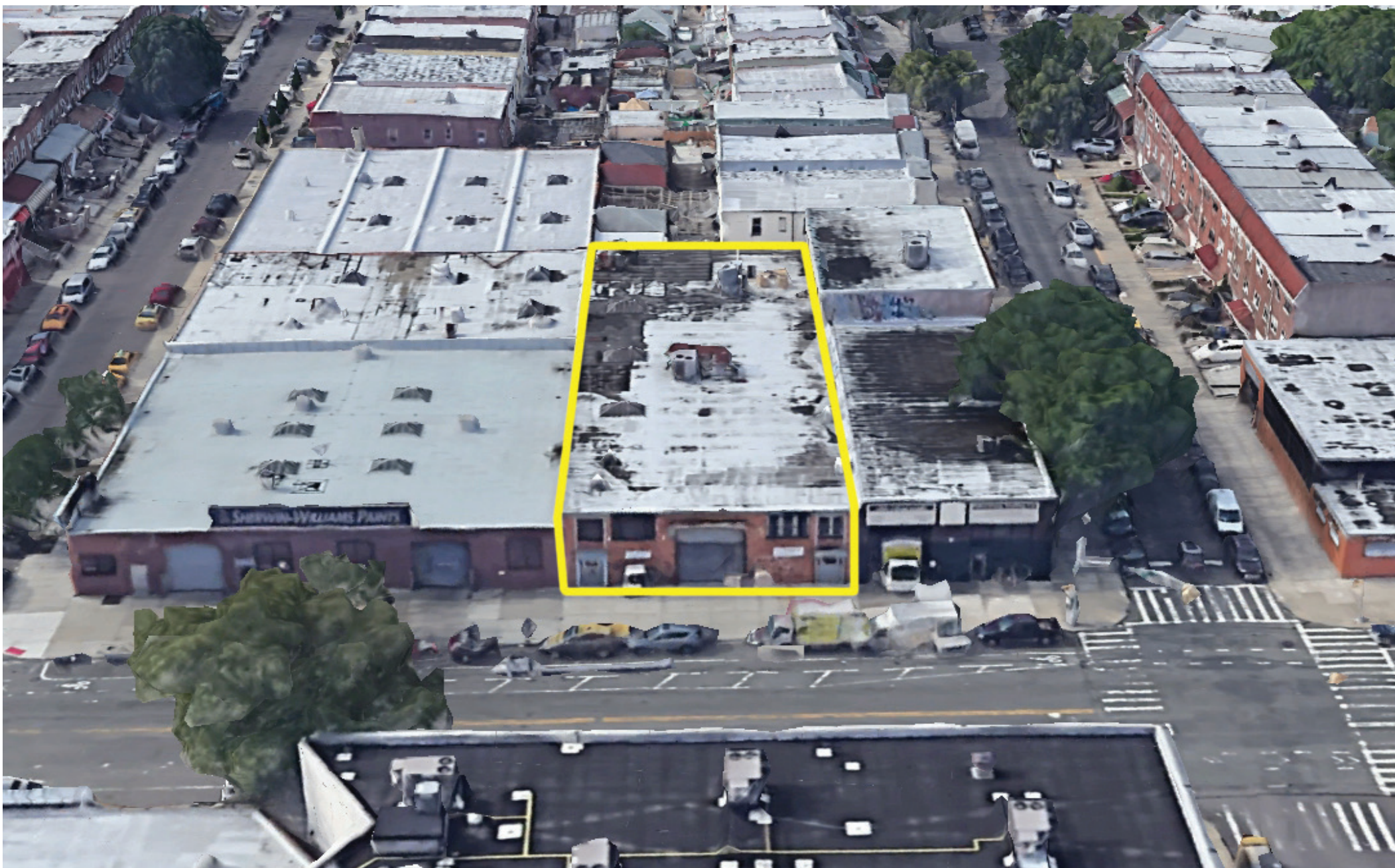
Asking Price *Call or E-mail*



ALL INFORMATION IS FROM SOURCES DEEMED RELIABLE, BUT SUBJECT TO: ERRORS, CHANGES WITHOUT NOTICE, PRIOR SALE OR LEASE, WITHDRAWAL WITHOUT NOTICE. ALL MEASUREMENTS ARE APPROXIMATE

Location Profile





**CONTACT
EXCLUSIVE
AGENTS:**

MATHEW DIANA
718.729.7474 x134
mdiana@dyrealty.com

PAUL J. YURAS
718.729.7474 x113
pyuras@dyrealty.com

RANEE JABER
718.729.7474 x135
rjaber@dyrealty.com



ALL INFORMATION IS FROM SOURCES DEEMED RELIABLE, BUT SUBJECT TO: ERRORS, CHANGES WITHOUT NOTICE, PRIOR SALE OR LEASE, WITHDRAWAL WITHOUT NOTICE. ALL MEASUREMENTS ARE APPROXIMATE

36-36 33RD STREET, SUITE 503 • LONG ISLAND CITY, NY 11106 • 718.729.7474 • WWW.DYREALTY.COM