

30,000 SF QUEENS BUILDING WITH 13,000 SF LAND FOR SUBLEASE

133-40 31st Drive, Flushing, Queens, NY



Property Description

DY Realty Group, LLC has been retained on an exclusive basis to handle the sublease of 133-40 31st Drive in Flushing, Queens.

The site consists of a $\pm 30,000$ sf industrial building with $\pm 13,000$ sf of surrounding land. The building has 20,000 sf on the ground floor and a 10,000 sf mezzanine, including approximately 3,000 sf of office space.

Loading is serviced through 3 drive-in doors, and the property is zoned M2-1.

The sublease being offered is for approximately 2.5 years, with a long term deal with ownership possible.

| | |
|-----------------------|-----------------------|
| Total Building | 30,000 sf |
| Ground Floor | 20,000 sf |
| Mezzanine | 10,000 sf |
| Total Land | 13,000 sf |
| Office Space | 3,000 sf |
| Plot Size | 33,000 sf |
| Zone | M2-1 |
| Loading | 3 Drive-in Doors |
| Sublease Term | 2.5 Years |
| Sublease Price | <i>Call or E-mail</i> |

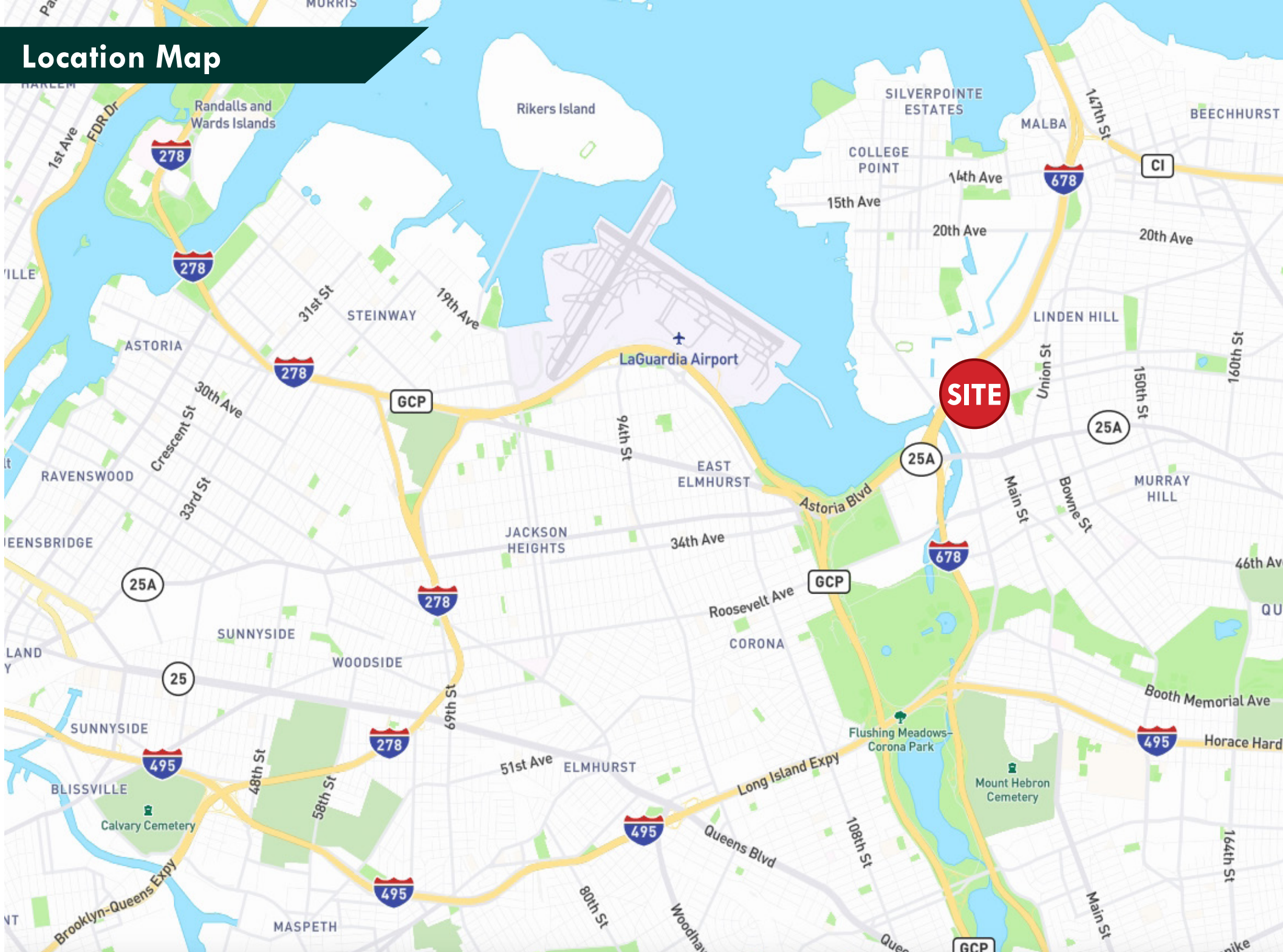


ALL INFORMATION IS FROM SOURCES DEEMED RELIABLE, BUT SUBJECT TO: ERRORS, CHANGES WITHOUT NOTICE, PRIOR SALE OR LEASE, WITHDRAWAL WITHOUT NOTICE. ALL MEASUREMENTS ARE APPROXIMATE

Property Photos



Location Map



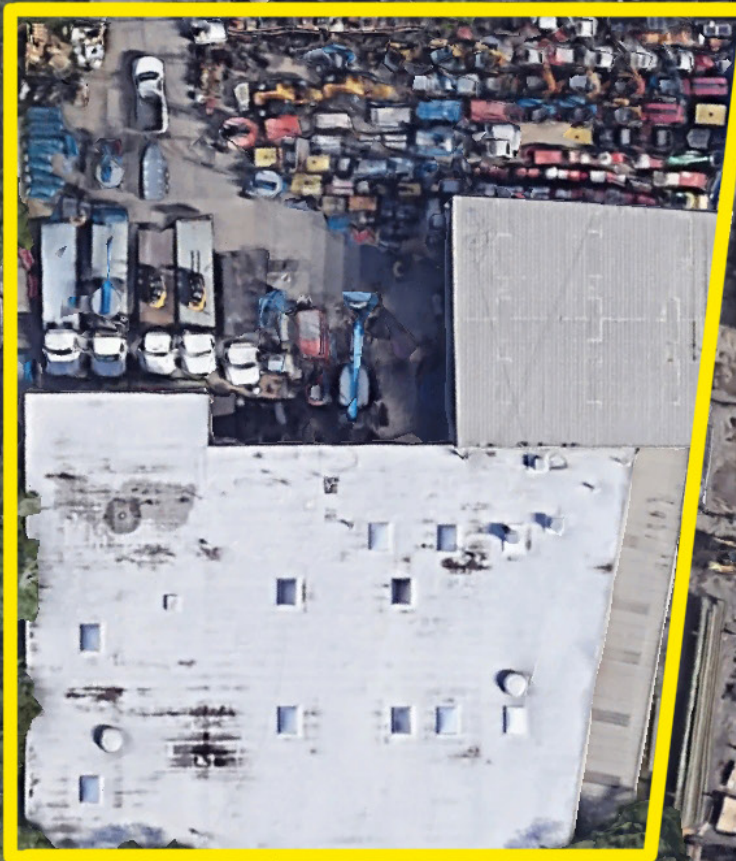


CONTACT EXCLUSIVE AGENT

Mathew Diana

718-729-7474 x134

MDiana@DYRealty.com



ALL INFORMATION IS FROM SOURCES DEEMED RELIABLE, BUT SUBJECT TO: ERRORS, CHANGES WITHOUT NOTICE, PRIOR SALE OR LEASE, WITHDRAWAL WITHOUT NOTICE. ALL MEASUREMENTS ARE APPROXIMATE

36-36 33RD STREET, SUITE 503 • LONG ISLAND CITY, NY 11106 • 718.729.7474 • WWW.DYREALTY.COM