

# ±62,000 SF LIC WAREHOUSE WITH PARKING FOR LEASE

30-10 Review Avenue, Long Island City, Queens



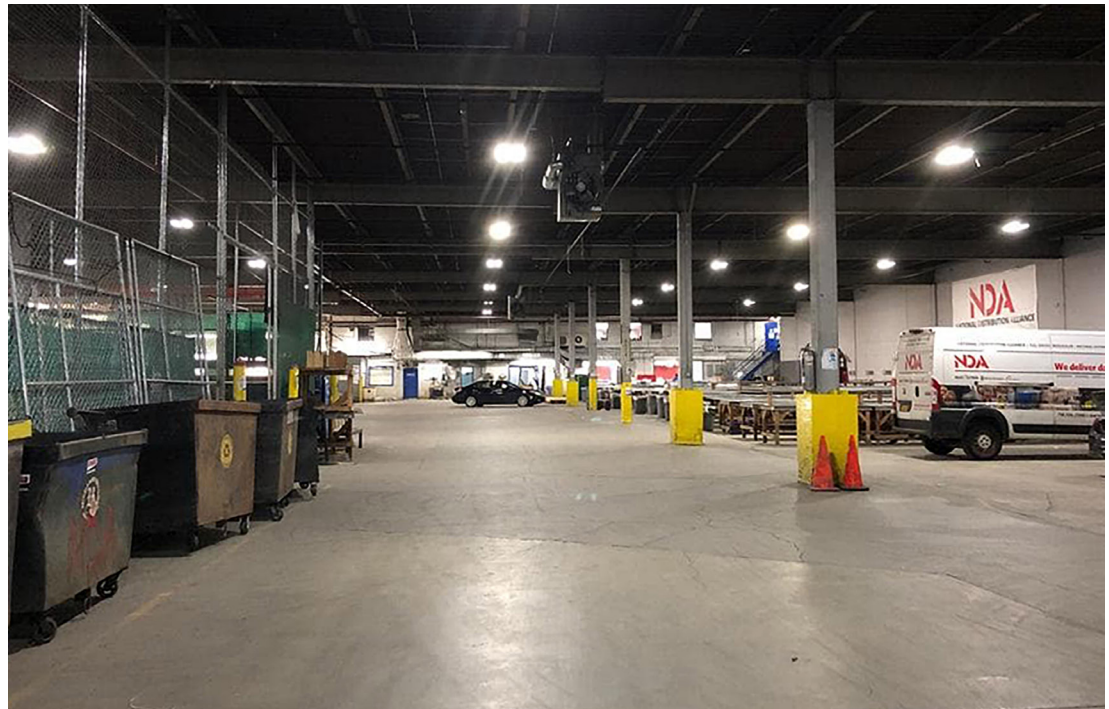
# Property Description

DY Realty Group, LLC is pleased to announce that it has been retained on an exclusive basis to handle the leasing of 30-10 Review Avenue in Long Island City, Queens.

Available at the building  $\pm 62,000$  sf of total space, with 54,000 sf of ground floor warehouse and 8,000 sf of mezzanine office space. Short term divisions of 15,000 to 25,000 sf are possible. The space features 18' ceiling height, 25 car parking, 3 trailer-deep loading docks and 1 drive-up ramp into the building.

Centrally located in Long Island City, less than a mile to the entrance ramp to the Long Island Expressway and the 7 subway line. Ideal for a wide variety of industrial users.

<b>Total Building</b>	$\pm 62,000$ sf
<b>Ground Floor</b>	54,000 sf Warehouse
<b>Mezzanine</b>	8,000 sf Office Space
<b>Parking</b>	25 Cars
<b>Divisions</b>	15,000 to 25,000 sf (Short Term)
<b>Loading</b>	3 Trailer-Deep Loading Docks 1 Drive-Up Ramp
<b>Ceiling</b>	18'
<b>Power</b>	800 Amps
<b>Zone</b>	M3-1
<b>Block / Lot</b>	294 / 173
<b>Lease Price</b>	<i>Call or E-mail</i>



ALL INFORMATION IS FROM SOURCES DEEMED RELIABLE, BUT SUBJECT TO: ERRORS, CHANGES WITHOUT NOTICE, PRIOR SALE OR LEASE, WITHDRAWAL WITHOUT NOTICE. ALL MEASUREMENTS ARE APPROXIMATE

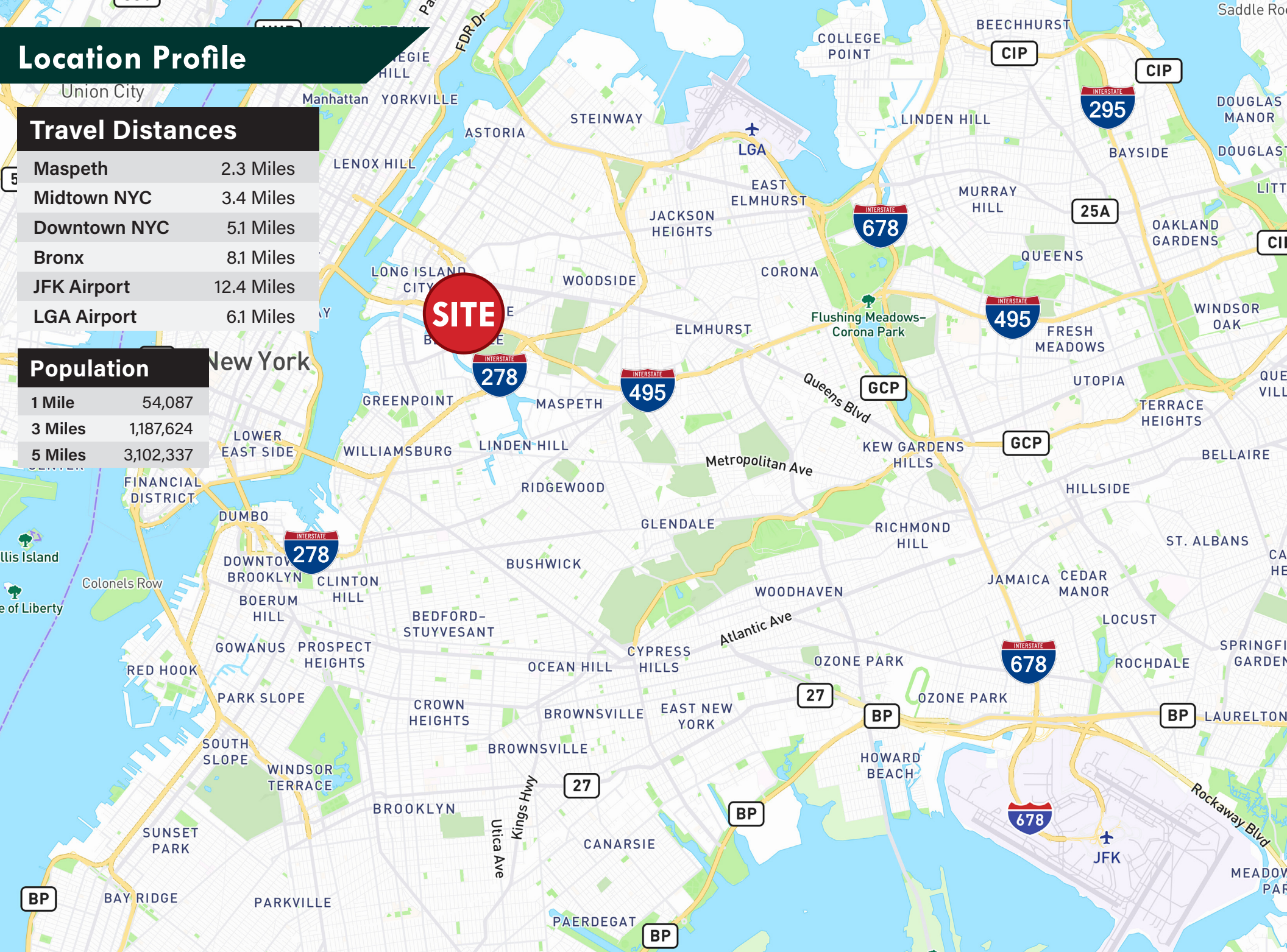
# Location Profile

## Travel Distances

Maspeth	2.3 Miles
Midtown NYC	3.4 Miles
Downtown NYC	5.1 Miles
Bronx	8.1 Miles
JFK Airport	12.4 Miles
LGA Airport	6.1 Miles

## Population

1 Mile	54,087
3 Miles	1,187,624
5 Miles	3,102,337





**CONTACT  
EXCLUSIVE  
AGENT:**

**PAUL J. YURAS**  
718.729.7474 x113  
pyuras@dyrealty.com

**DY**  
REALTY GROUP

ALL INFORMATION IS FROM SOURCES DEEMED RELIABLE, BUT SUBJECT TO: ERRORS, CHANGES WITHOUT NOTICE, PRIOR SALE OR LEASE, WITHDRAWAL WITHOUT NOTICE. ALL MEASUREMENTS ARE APPROXIMATE

36-36 33RD STREET, SUITE 503 • LONG ISLAND CITY, NY 11106 • 718.729.7474 • WWW.DYREALTY.COM