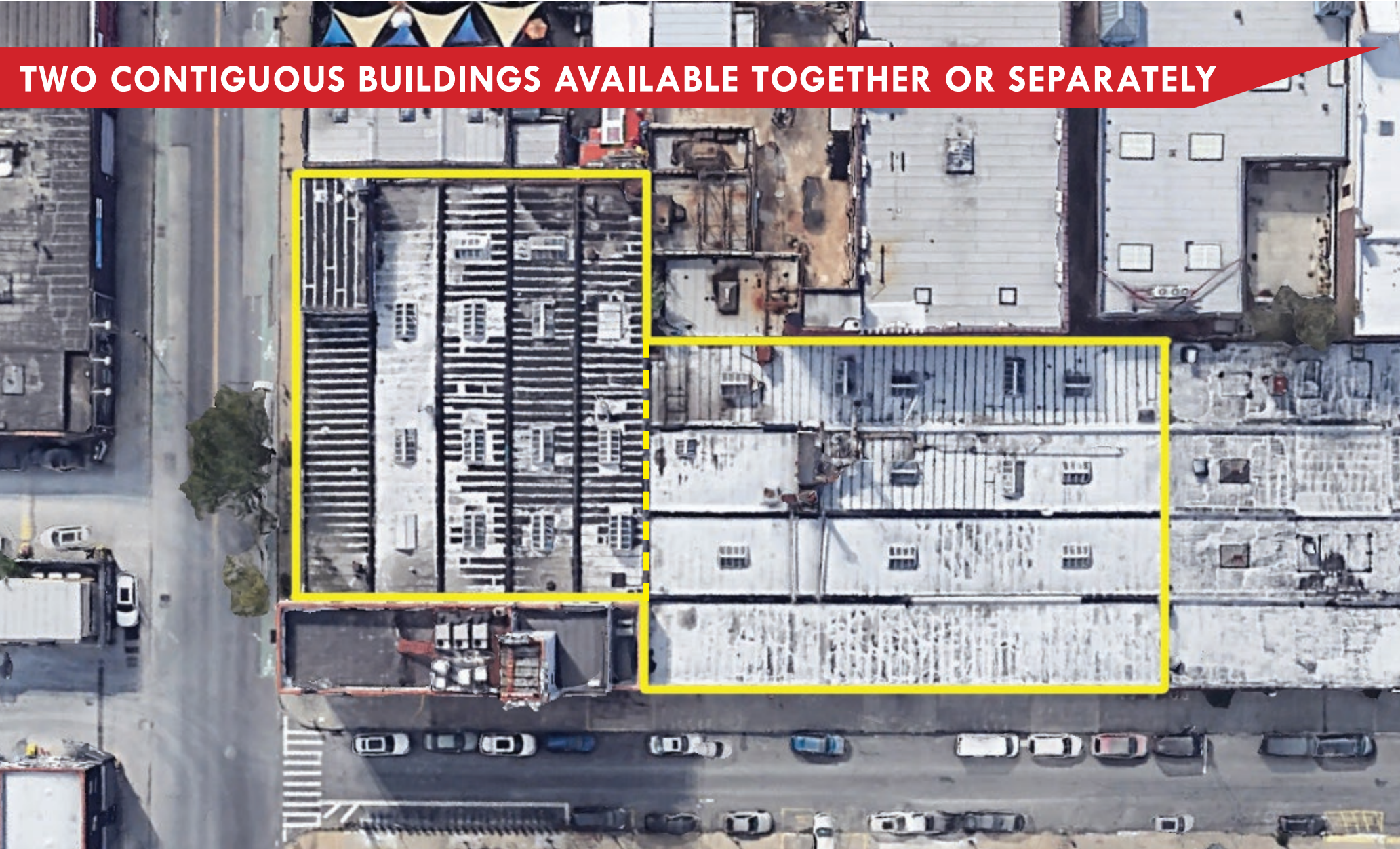


UP TO 28,100 SF EAST WILLIAMSBURG WAREHOUSE SPACE FOR LEASE

179 Morgan Avenue / 368 Stagg Street, East Williamsburg, Brooklyn



TWO CONTIGUOUS BUILDINGS AVAILABLE TOGETHER OR SEPARATELY




Property Description

DY Realty Group, LLC has been retained on an exclusive basis to handle the leasing of 179 Morgan Avenue & 368 Stagg Street in East Williamsburg, Brooklyn.

The site consists of two contiguous buildings totaling 28,100 sf (13,100 sf & 15,000 sf) that can be leased together or separately.

The site has 4 total drive-in doors, 14' ceiling height, gas heat, & heavy power.

Centrally located in East Williamsburg, Brooklyn, a short distance to the Morgan Avenue  subway station & nearby bus lines, with direct access to all of New York City via the Brooklyn-Queens Expressway.

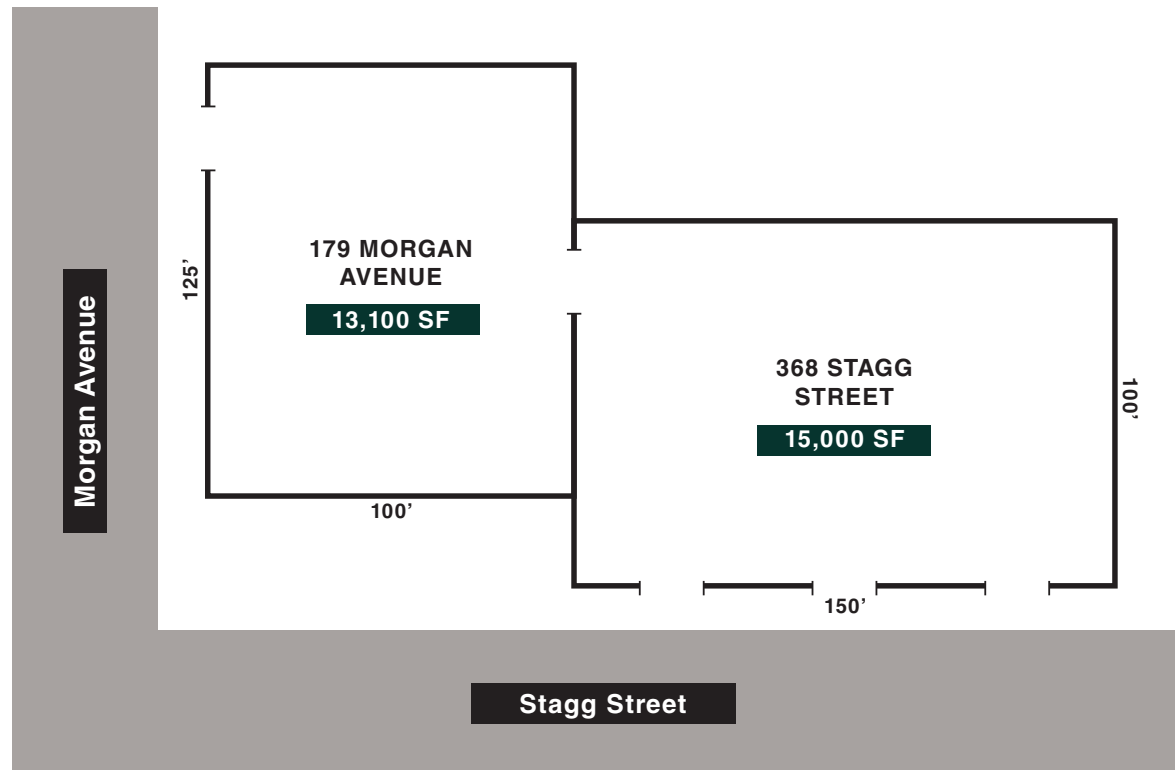


179 MORGAN AVENUE, BROOKLYN

Building	12,500 sf Ground Floor 600 sf 2nd Floor Office
Ceiling	14'
Zone	M1-1
Loading	1 Drive-in Door
Frontage	125' on Morgan Avenue
Sprinkler	Fully Sprinklered

368 STAGG STREET, BROOKLYN

Building	15,000 sf Ground Floor
Ceiling	14'
Zone	M1-1
Loading	3 Drive-in Doors
Frontage	150' on Stagg Street



ALL INFORMATION IS FROM SOURCES DEEMED RELIABLE, BUT SUBJECT TO: ERRORS, CHANGES WITHOUT NOTICE, PRIOR SALE OR LEASE, WITHDRAWAL WITHOUT NOTICE. ALL MEASUREMENTS ARE APPROXIMATE

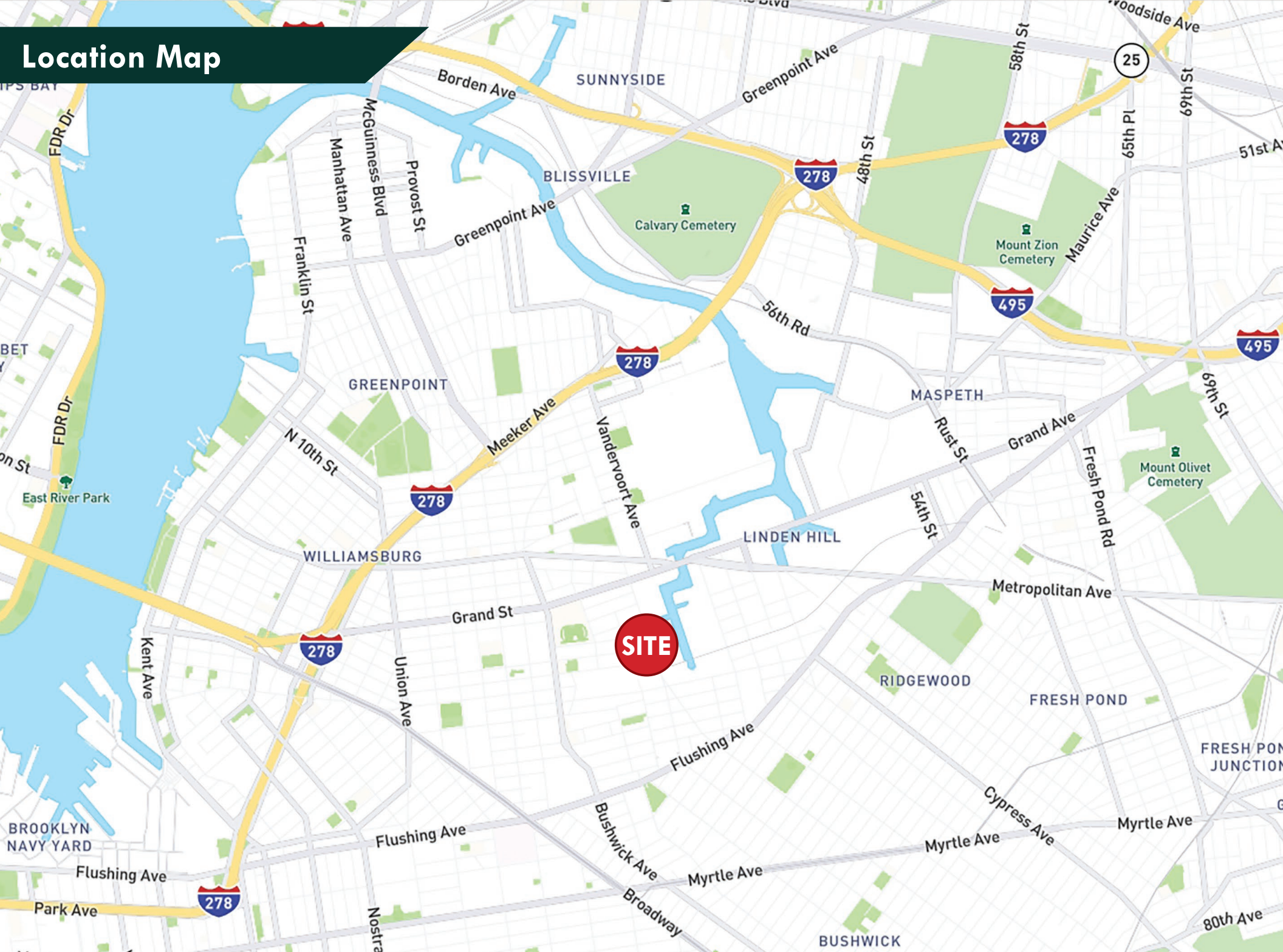
Property Photos



ALL INFORMATION IS FROM SOURCES DEEMED RELIABLE, BUT SUBJECT TO: ERRORS, CHANGES WITHOUT NOTICE, PRIOR SALE OR LEASE, WITHDRAWAL WITHOUT NOTICE. ALL MEASUREMENTS ARE APPROXIMATE

36-36 33RD STREET, SUITE 503 • LONG ISLAND CITY, NY 11106 • 718.729.7474 • WWW.DYREALTY.COM

Location Map



Kris Jimenez
Associate Broker

718-729-7474 x120

347-865-2945 Cell

KJimenez@DYRealty.com



ALL INFORMATION IS FROM SOURCES DEEMED RELIABLE, BUT SUBJECT TO: ERRORS, CHANGES WITHOUT NOTICE, PRIOR SALE OR LEASE, WITHDRAWAL WITHOUT NOTICE. ALL MEASUREMENTS ARE APPROXIMATE